

Counselors' Resource Book

Oklahoma's Colleges and Universities

2023-24

- *Getting Ready for College*
- *Choosing the Right Courses*
- *Paying for College*
- *Profiles of Colleges & Universities*

OKLAHOMA STATE REGENTS
FOR HIGHER EDUCATION

Improving our future by degrees



2023-24

COUNSELORS' RESOURCE BOOK

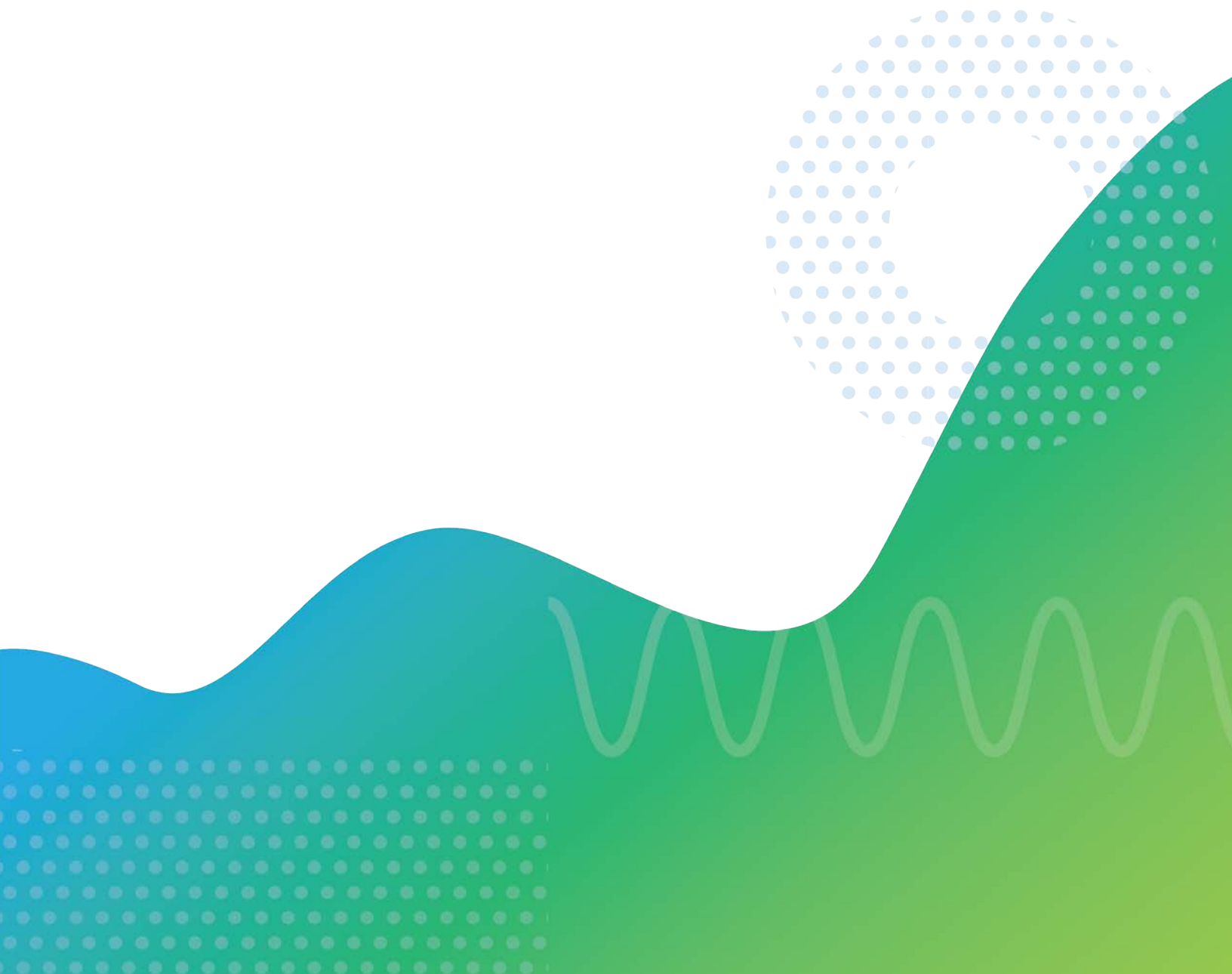
OKLAHOMA STATE REGENTS FOR HIGHER EDUCATION

This guide is a project of Oklahoma higher education, produced in coordination with the Communicators Council. Published by the Oklahoma State Regents for Higher Education in September 2023.

HAVE A QUESTION?

counselorinfo@osrhe.edu

College questions answered promptly



COUNSELORS' RESOURCE BOOK

OKLAHOMA STATE REGENTS FOR HIGHER EDUCATION



Chair
Jack Sherry
Holdenville



Vice Chair
Dennis Casey
Morrison



Secretary
Justice Steven W. Taylor
McAlester



Assistant Secretary
Courtney Warmington
Edmond



P. Mitchell Adwon
Tulsa



Jeffrey W. Hickman
Fairview



Dustin Hilliary
Lawton



Ann Holloway
Ardmore



Michael C. Turpen
Oklahoma City

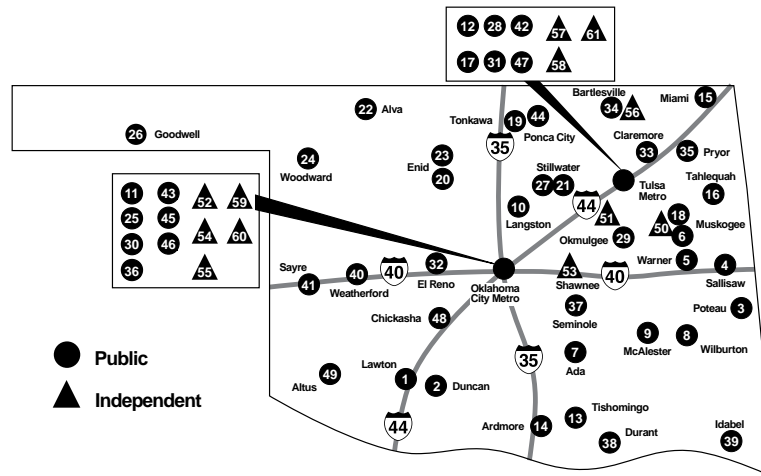


Chancellor
Allison D. Garrett
Edmond

The Oklahoma State Regents for Higher Education, in compliance with Titles VI and VII of the Civil Rights Act of 1964, Executive Order 11246 as amended, Title IX of the Education Amendments of 1972, Americans with Disabilities Act of 1990 and other federal laws and regulations, do not discriminate on the basis of race, color, national origin, sex, age, religion, handicap or status as a veteran in any of its policies, practices or procedures. This includes, but is not limited to, admissions, employment, financial aid and educational services. This publication is issued by the Oklahoma State Regents for Higher Education, as authorized by 70 O.S. 2001, Section 3206. Copies have not been printed but are available through the agency website at okhighered.org. Two printout copies have been deposited with the Publications Clearinghouse of the Oklahoma Department of Libraries. This publication was produced in September 2023.

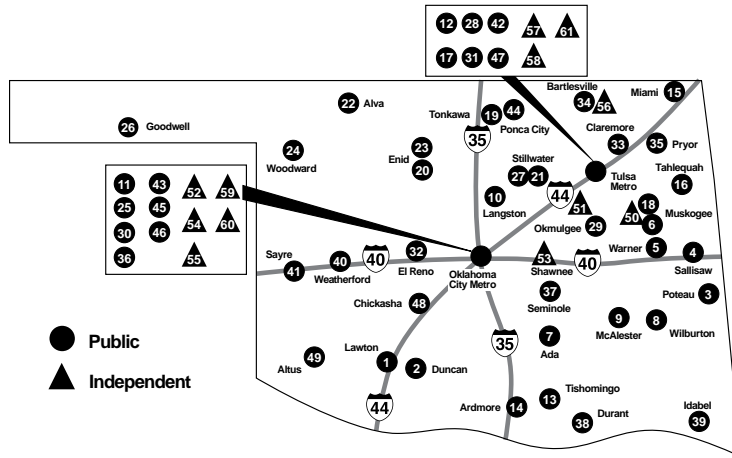
TABLE OF CONTENTS

College Is Closer Than You Think.....	5	Oklahoma's Official College Planning Website	20
Getting Ready for College: OSRHE Resources	7	OKcollegestart.org.....	20
Getting Into College	10	Public Institutions	23
What It Takes	10	Cameron University.....	24
Choosing the Right Courses	12	Carl Albert State College	25
Transferring	12	Connors State College	26
Accreditation.....	12	East Central University.....	27
International Students.....	12	Eastern Oklahoma State College	28
Paying For College.....	13	Langston University.....	29
What It Costs	13	Murray State College.....	30
Money for College	14	Northeastern Oklahoma A&M College.....	31
Oklahoma Grants	14	Northeastern State University.....	32
Oklahoma Tuition Aid Grant Program (OTAG)	14	Northern Oklahoma College.....	33
Oklahoma Tuition Equalization Grant (OTEG)	14	Northwestern Oklahoma State University.....	34
Oklahoma Scholarships & Tuition Waivers.....	15	Oklahoma City Community College.....	35
Oklahoma's Promise	15	Oklahoma Panhandle State University.....	36
Heroes Promise	15	Oklahoma State University.....	37
Oklahoma National Guard Educational Assistance Program	15	Oklahoma State University Institute of Technology	38
Academic Scholars Program	15	Oklahoma State University-Oklahoma City	39
Regional University Baccalaureate Scholarship.....	15	Oklahoma State University-Tulsa	40
Inspired to Teach	15	Redlands Community College	41
George and Donna Nigh Public Service Scholarship	15	Rogers State University.....	42
Scholars for Excellence in Child Care Program	15	Rose State College.....	43
Tuition Waivers	16	Seminole State College	44
College-Awarded Tuition Waiver Scholarships	16	Southeastern Oklahoma State University.....	45
State-Authorized Tuition Waivers	16	Southwestern Oklahoma State University.....	46
Independent Living Act (Foster Care Tuition Waiver)	16	Tulsa Community College.....	47
Other Oklahoma Assistance Programs	16	University Center at Ponca City.....	48
Employer Tuition Assistance for Higher Education.....	16	University of Central Oklahoma.....	49
Oklahoma 529	16	University of Oklahoma	50
SREB Academic Common Market	16	University of Science & Arts of Oklahoma.....	51
Teacher Shortage Employment Incentive Program	16	Western Oklahoma State College	52
Tax Credits	16	Independent Institutions.....	53
Federal American Opportunity and		Bacone College	54
Lifetime Learning Tax Credits	16	College of the Muscogee Nation	55
Resources	17	Mid-America Christian University	56
Counselor Materials Calendar	17	Oklahoma Baptist University	57
Contact Information	17	Oklahoma Christian University	58
OCAP Resources	18	Oklahoma City University	59
Social Media Connections	18	Oklahoma Wesleyan University.....	60
Helpful Websites.....	19	Oral Roberts University	61
		Southern Nazarene University.....	62
		Southwestern Christian University.....	63
		The University of Tulsa	64



OKLAHOMA PUBLIC COLLEGES, UNIVERSITIES, TECHNICAL BRANCHES, UNIVERSITY CENTERS AND LEARNING SITES

1. Cameron University, Lawton
cameron.edu | 800.454.7600
2. Cameron University, Duncan
cameron.edu/duncan | 877.282.3626
3. Carl Albert State College, Poteau
carlalbert.edu | 918.647.1200
4. Carl Albert State College, Sallisaw
carlalbert.edu | 918.775.6977
5. Connors State College, Warner
connorsstate.edu | 918.463.2931
6. Connors State College, Muskogee
connorsstate.edu | 918.687.6747
7. East Central University, Ada
ecok.edu | 580.332.8000
8. Eastern Oklahoma State College, Wilburton
eosc.edu | 918.465.2361
9. Eastern Oklahoma State College, McAlester
eosc.edu/mcalester | 918.426.5272
10. Langston University, Langston
langston.edu | 877.466.2231
11. Langston University - Oklahoma City
langston.edu/okc/langston-okc | 405.962.1620
12. Langston University - Tulsa
langston.edu/tulsa | 918.877.8100
13. Murray State College, Tishomingo
mscok.edu | 800.342.0698
14. Murray State College, Ardmore
mscok.edu | 580.319.0370
15. Northeastern Oklahoma A&M College, Miami
neo.edu | 888.464.6636
16. Northeastern State University, Tahlequah
nsuok.edu | 800.722.9614
17. Northeastern State University, Broken Arrow
nsuok.edu/brokenarrow | 918.449.6000
18. Northeastern State University, Muskogee
nsuok.edu/muskogee | 918.683.0040
19. Northern Oklahoma College, Tonkawa
noc.edu | 580.628.6200
20. Northern Oklahoma College, Enid
noc.edu/enid | 918.343.7777
21. Northern Oklahoma College, Stillwater
noc.edu/stillwater | 405.744.2246
22. Northwestern Oklahoma State University, Alva
nwosu.edu | 580.327.1700
23. Northwestern Oklahoma State University, Enid
nwosu.edu/enid | 580.237.0334
24. Northwestern Oklahoma State University, Woodward
nwosu.edu/woodward | 580.256.0047
25. Oklahoma City Community College, Oklahoma City
occc.edu | 405.682.1611
26. Oklahoma Panhandle State University, Goodwell
opsu.edu | 800.664.6778
27. Oklahoma State University, Stillwater
okstate.edu | 800.233.5019
28. Oklahoma State University Center for Health Sciences, Tulsa
medicine.okstate.edu | 800.677.1972



- 29. Oklahoma State University Institute of Technology, Okmulgee
osuit.edu | 800.722.4471
- 30. Oklahoma State University - Oklahoma City
osuokc.edu | 800.560.4099
- 31. Oklahoma State University - Tulsa
osu-tulsa.okstate.edu | 800.364.0710
- 32. Redlands Community College, El Reno
redlandsccl.edu | 866.415.6367
- 33. Rogers State University, Claremore
rsu.edu | 800.256.7511
- 34. Rogers State University, Bartlesville
rsu.edu/bartlesville | 800.256.7511
- 35. Rogers State University, Pryor
rsu.edu/pryor | 918.825.6117
- 36. Rose State College, Midwest City
rose.edu | 866.621.0987
- 37. Seminole State College, Seminole
sscok.edu | 405.382.9950
- 38. Southeastern Oklahoma State University, Durant
se.edu | 800.435.1327
- 39. Southeastern Oklahoma State University, Idabel
se.edu/mccurtain | 888.286.9431
- 40. Southwestern Oklahoma State University, Weatherford
swosu.edu | 580.772.6611
- 41. Southwestern Oklahoma State University, Sayre
swosu.edu | 580.928.5533
- 42. Tulsa Community College, Tulsa
tulsacc.edu | 918.595.7000
- 43. University of Central Oklahoma, Edmond
uco.edu | 405.974.2727
- 44. University Center at Ponca City
ucponcacity.com | 580.762.2856
- 45. University of Oklahoma, Norman
ou.edu | 800.234.6868
- 46. University of Oklahoma Health Sciences Center, Oklahoma City
ouhsc.edu | 877.577.5655
- 47. University of Oklahoma - Tulsa
ou.edu/tulsa/ | 918.660.3000
- 48. University of Science and Arts of Oklahoma, Chickasha*
usao.edu | 580.718.5600
- 49. Western Oklahoma State College, Altus
wosc.edu | 580.477.2000
- 50. Bacone College, Muskogee
bacone.edu | 888.682.5514
- 51. College of the Muscogee Nation, Okmulgee
cmn.edu | 918.549.2800
- 52. Mid-America Christian University, Oklahoma City
macu.edu | 888.436.3035
- 53. Oklahoma Baptist University, Shawnee
okbu.edu | 800.654.3285
- 54. Oklahoma Christian University, Oklahoma City
oc.edu | 800.877.5010
- 55. Oklahoma City University, Oklahoma City
okcu.edu | 800.633.7242
- 56. Oklahoma Wesleyan University, Bartlesville
okwu.edu | 800.468.6292
- 57. Oral Roberts University, Tulsa
oru.edu | 800.678.8876
- 58. Phillips Theological Seminary, Tulsa
ptstulsa.edu | 918.610.8303
- 59. Southern Nazarene University, Bethany
snu.edu | 800.648.9899
- 60. Southwestern Christian University, Bethany
swcu.edu | 888.418.9272
- 61. The University of Tulsa, Tulsa
utulsa.edu | 800.331.3050

INDEPENDENT COLLEGES AND UNIVERSITIES (MAIN CAMPUSES)

*Oklahoma's Public Liberal Arts University

College is an investment in your students' futures, and they should be planning for it now. The Oklahoma State Regents for Higher Education (OSRHE) offers many free resources to help students and their families consider college options and plan for their future education needs. Many of the programs and resources are listed in this section. For more information, students and parents can visit OKcollegestart.org and UCanGo2.org, call the Student Information Hotline at 800.858.1840 (405.225.9239 in Oklahoma City) or email a request to studentinfo@osrhe.edu.

For OSRHE resources available in Spanish, visit okhighered.org/students/publications/espanol. Multiple staff are available to assist students and parents in Spanish through the State Regents' Student Information Hotline noted above.

THESE WILL HELP

Advanced Placement Courses (AP)

Allow students to take college-level coursework in high school and receive credit at Oklahoma colleges and universities. For more information, visit okhighered.org/advanced-placement.

Concurrent Enrollment

Allows eligible junior and senior high school students to take credit-earning college courses. For more information, visit okhighered.org/concurrent-enrollment.

Cooperative Agreements

Technology centers across the state have partnered with higher education institutions in cooperative agreement programs. High school students and adults may earn college credit through assessments, contractual arrangements, and technical transfer toward Technical Certificates, Associate in Applied Science degrees, and Bachelor of Technology degrees offered by a state system college or university. An inventory of current assessments accepted for college credit is available at showwhatyouknowok.org/careertech-occupational-licenses/cooperative-agreement-program-inventory/.

Course Transfer

The State Regents provide a course transfer matrix outlining more than 8,100 courses that will transfer among Oklahoma's public and private colleges and universities. For more information, see the Transferring section, call the Student Transfer Hotline at 800.858.1840 or visit okcoursetransfer.org.

Gaining Early Awareness and Readiness for Undergraduate Programs (GEAR UP)

Administered by the State Regents, this federally funded program is designed to prepare middle and high school students for college success through direct student support services, including college campus tours, ACT preparation and testing, college exploration courses and one-on-one guidance from school specialists. GEAR UP offers college access and financial aid information and assistance to students and families, and provides school faculty and staff collaboration and leadership opportunities. For more information, visit okgearup.org.

Lead Oklahoma

Lead Oklahoma is a leadership class that comes with research-based curriculum and resources for students in grades 8 or 9. The goal of the program is to increase overall student achievement in school and college readiness while supporting diverse students to explore various careers and professions, especially careers in teacher education. Lead Oklahoma is offered by the Oklahoma Teacher Connection. For more information, call 800.858.1840 or 405.225.9197, or visit okhighered.org/otc/.

Oklahoma 529

Oklahoma 529 (formerly the Oklahoma 529 College Savings Plan) provides families with a smart, flexible way to save for their children's future. The plan offers a choice of investment options, tax advantages and the flexibility of using the savings at any qualified higher education institution both in the United States and abroad. Learn more at oklahoma529.com.

Oklahoma Money Matters (OKMM)

The financial literacy initiative of the State Regents and the Oklahoma College Assistance Program, OKMM helps K-12 schools, higher education campuses, and business and community partners develop or expand financial education services and helps students, adults and families successfully manage personal finances, understand consumer credit and navigate the financial aid process. For more information, call 800.970.OKMM or visit OklahomaMoneyMatters.org.

Oklahoma's Promise

Oklahoma's Promise (formerly Oklahoma Higher Learning Access Program) awards scholarships to students whose families meet certain income requirements and who have demonstrated a commitment to academic preparation in high school. Students must sign up for the program in grades 8-11 (home-schooled students must be age 13, 14, 15 or 16). There are additional academic, conduct and financial requirements to keep the scholarship during college. For more information, call 800.858.1840 or 405.225.9152 in Oklahoma City or visit okpromise.org.

Oklahoma Student Preparation

College readiness is more than academic preparation. The aspirations of students and their families to earn a college degree require guidance and support beginning at an early age, not just the senior year of high school. The State Regents' Student Preparation office provides the 10th grade PreACT, a college and career readiness assessment, which helps educators, parents and students identify progress in academic readiness. Through online resources, regional workshops, on-site training and conferences, PK-12 educators are provided with the resources necessary to ensure all Oklahoma students and their families are college-ready. For more information, call 405.225.9156 in Oklahoma City or visit okhighered.org/student-prep.

Student Information Hotline

Multiple staff are available to provide information about financial aid, admission requirements, placement scores and more in English and Spanish. Call 800.858.1840 or 405.225.9239 or email studentinfo@osrhe.edu.

Teach Oklahoma

Teach Oklahoma is an enriching elective class designed to “grow your own” teachers with integrated curriculum for high school juniors and seniors. The curriculum is provided at no cost to districts and targets high school students who are interested in discovering more about the various aspects of education. Additionally, the curriculum allows students to gain insight into successful learning strategies through an internship component, with an emphasis in teaching careers. Teach Oklahoma is offered by the Oklahoma Teacher Connection. For more information, call 800.858.1840 or 405.225.9197 or visit okhighered.org/otc/.

Educators Rising

Educators Rising is an extracurricular club/organization for junior high or high school students that highlights teaching as a rewarding and distinguished professional career choice. Educators Rising showcases various teaching fields and focuses on recruiting, retaining and placing teachers in urban and rural Oklahoma schools. Educators Rising hosts an annual state and national competition, with various categories, including a chance to be a national officer for the organization. For more information, please visit okhighered.org/otc or call 800.858.1840 (toll free) or 405.225.9197.

CHECK IT OUT

OKcollegestart.org

Provides a “one-stop shop” for students, parents, adult learners and educators. Students can create a portfolio; build a resume; complete career assessments; access test prep for the ACT, SAT, GRE and other exams; apply for the Oklahoma’s Promise scholarship; and practice a college application. In addition, students can search by keywords and find information about admission

requirements and financial aid, explore programs and majors, and receive personalized results to compare colleges. Students can also search for scholarships. See the OKcollegestart.org section for additional information and visit the site at OKcollegestart.org.

Oklahoma’s Promise Flyer

Explains the requirements and benefits of Oklahoma’s Promise, which awards scholarships to students with financial need who have demonstrated a commitment to academic success in high school. Posters and application forms are also available. Materials are provided to counselors in late summer for distribution to 8th, 9th, 10th and 11th grade students and are also available in Spanish. Visit the site at okpromise.org.

Preparing for College Brochures (8th-10th and Juniors/Seniors)

Outline the required courses students must take in high school to be admitted to an Oklahoma state college or university, admission standards, financial aid information and more. Digital brochures are available to counselors at okhighered.org in early fall for sharing with 8th through 12th grade students and their families.

Quick Glance for Concurrent Enrollment

These one-page documents provide concise information about concurrent enrollment for counselors, parents and students. Visit the concurrent enrollment page at OKcollegestart.org.

ReadySetRepay.org

Keeps students on track for student loan success by encouraging them to make smart borrowing decisions from the start. Topics include loan management, successful loan repayment and avoiding loan default. Visit the site at ReadySetRepay.org.

StartWithFAFSA.org

Provides students and parents with information about specific Free Application for Federal Student Aid (FAFSA) topics and access to helpful FAFSA tools and publications. Visit the site at StartWithFAFSA.org.

UCanGo2.org High School Counselor and FAFSA Toolkits

Gives high school counselors and teachers tools to help their students plan, prepare and pay for college, including information about the Free Application for Federal Student Aid (FAFSA). The online toolkits include UCanGo2’s college planning and FAFSA education materials. Find helpful educator tools at UCanGo2.org.

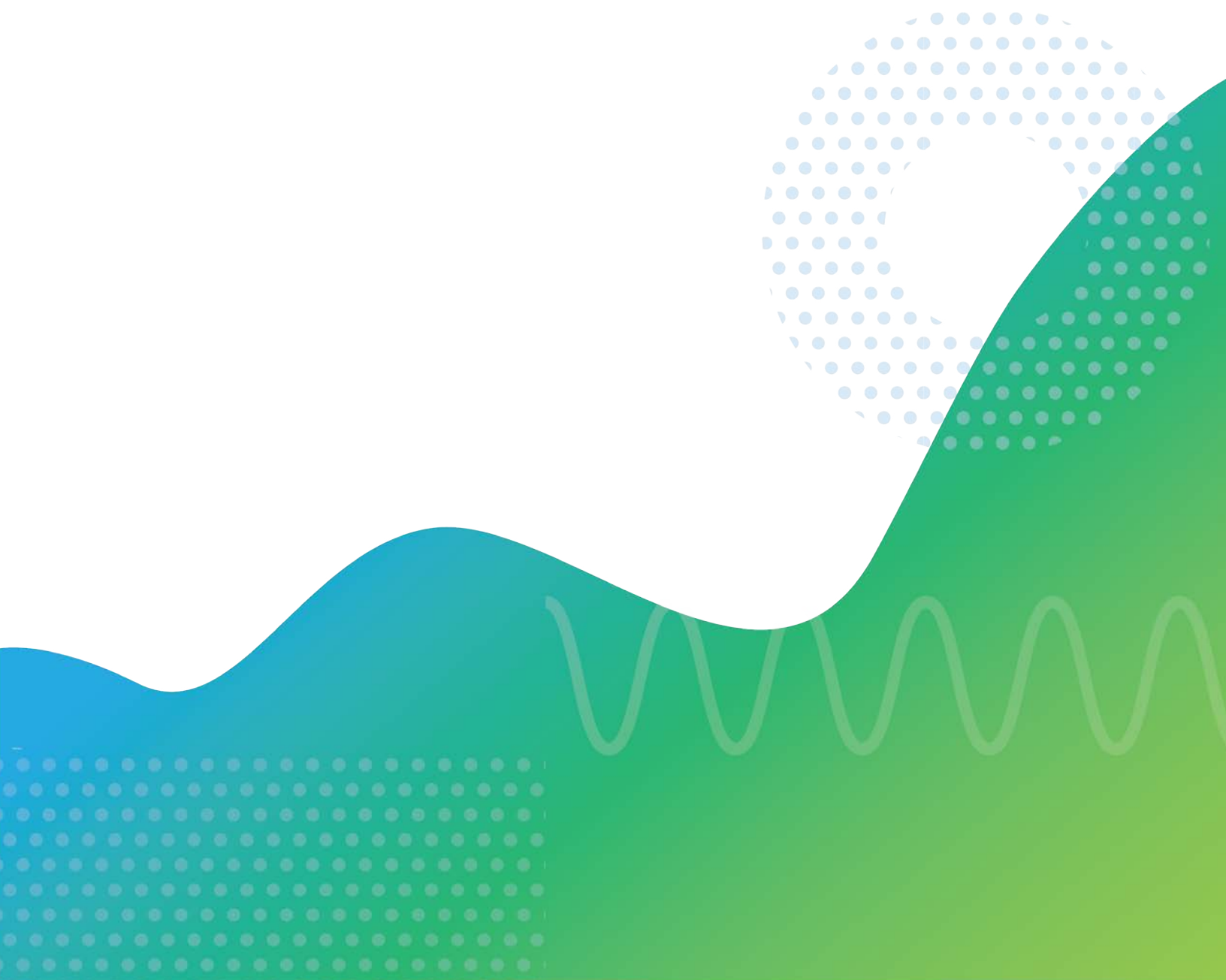


Helpful Publications

Publications are available for download at okhighered.org and ucango2.org. For publications available in Spanish, visit okhighered.org/students/publications/espanol.

Multiple staff are available to assist students and parents in English and Spanish through the State Regents' Student Information Hotline, which families can reach at 800.858.1840 (405.225.9239 in Oklahoma City), studentinfo@osrhe.edu, or in writing:

Oklahoma State Regents for Higher Education
Attn: Communications Department
P.O. Box 108850
Oklahoma City, OK 73101-8850



WHAT IT TAKES: PUBLIC COLLEGE AND UNIVERSITY ADMISSION REQUIREMENTS

Courses to Take

Listed in the table below are the courses you must take if you want to go to an Oklahoma state college or university. These courses will also help you prepare for on-the-job success if you decide to jump straight into the job market after high school.

NOTE: Requirements may change, so check with your counselor for details.

Oklahoma's Promise (Oklahoma's Higher Learning Access Program) course requirements are consistent with college admission requirements, except Oklahoma's Promise students must take additional courses. Visit okpromise.org/required-courses.shtml for more details.

Suggestion for Success: Colleges and universities also recommend, but do not require, that you take an additional unit in laboratory science, an additional unit in math, plus two units in speech or fine arts (music, art, drama).

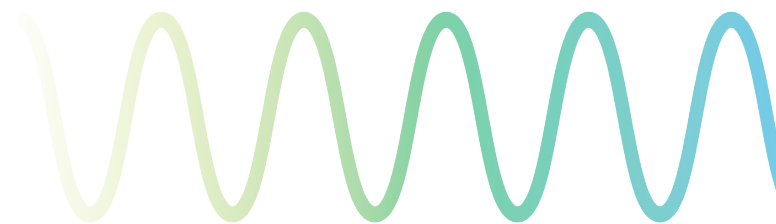
Courses	Units	Examples
English	4	grammar, composition and literature
Math	3	Algebra I, Algebra II, geometry, math analysis, trigonometry, pre-calculus, statistics and probability (must have completed geometry and Algebra II), calculus and Advanced Placement (AP) statistics
Laboratory Science	3	biology, chemistry, physics or any lab science certified by school district; general science courses don't qualify
History and Citizenship Skills	3	must include one unit of American history and two units from the subjects of history, economics, geography, government, civics and/or non-Western culture
Other	2	from any of the subjects listed above, any AP course, most courses taken through concurrent enrollment, or from computer science, foreign language, high school psychology or high school sociology
TOTAL	15	

First-time entering students must meet assessment requirements before enrolling in college-level courses. See the State Regents' Student Assessment and Remediation Policy for more information.

Grades to Make

When you apply for admission to an Oklahoma state college or university, the institution will look at your score on a national test (ACT or SAT); your high school GPA and its ranking within your high school class; AND your GPA in the 15 core courses required for college entry. Some colleges and universities may also have the option for you to be admitted without submitting an ACT or SAT score.

NOTE: Requirements may change, so see your counselor for up-to-date information. Also, concurrent enrollment and Cooperative Agreement enrollment by high school students may have different standards. If you want to go to a state university but do not meet the course and grade requirements, see your counselor.



OKLAHOMA STATE COLLEGE AND UNIVERSITY ADMISSION STANDARDS FOR FALL 2023

Minimum High School Performance Criteria for Admission (okcollegestart.org/College_Planning/Prepare_for_College/grades_to_make)

NOTE: While all students are encouraged to take the ACT or SAT if the tests are available, public colleges and universities will be authorized to use multiple measures of student performance to make admission and placement decisions for the fall 2023 semester. For more information, students should contact the admissions office at the college or university they would like to attend.

	OPTION 1 MINIMUM ACT/SAT	OPTION 2 MINIMUM GPA AND CLASS RANK	OPTION 3
	24 ACT/1160 SAT ²	3.0 GPA AND top 33%	3.0 GPA AND 21 ACT/1060 SAT ²
	OPTION 4 ACT/SAT OR HIGH SCHOOL GPA PLUS COGNITIVE FACTORS AND NON-COGNITIVE FACTORS		
Oklahoma State University ¹	<ul style="list-style-type: none"> Students who score between current OSU admission standards and the minimum State Regents' standards (22 ACT or 1020 SAT² or unweighted high school core curriculum GPA of at least 3.0) Cognitive Factors (60%) Non-Cognitive Factors (40%) 		
University of Oklahoma	Applications are evaluated using a holistic admissions process that takes into account academic success as well as several other factors. ³ You should fulfill the following requirements: take required high school classes and graduate from an accredited high school or have a GED and take the ACT or SAT exam.		
University of Science and Arts of Oklahoma	24 ACT/1160 SAT ² AND 3.0 GPA or top 50% class rank	3.0 GPA AND top 25% class rank	22 ACT/1100 SAT ² AND 3.0 GPA
Regional Universities	20 ACT/1030 SAT ²	2.7 GPA AND top 50% class rank	2.7 GPA
Community Colleges	You don't need to make certain scores, but you should fulfill the following requirements: take required high school classes and graduate from an accredited high school, or have a GED and take the ACT or SAT exam.		

¹Students who do not meet these requirements undergo a review of cognitive and noncognitive factors. Cognitive factors include noted academic admission standards; quality, quantity and level of coursework throughout the entire high school program; completion of a progressively challenging math sequence, demonstrated by performance; and class rank taken in context with academic rigor and class size of high school attended. Noncognitive factors include positive self-concept, realistic self-appraisal, long-term goals, leadership experience, community and knowledge in an acquired field. Cognitive factors will be weighted at 60% and noncognitive at 40%.

²This score is valid for SATs administered on or after March 5, 2016. This score is based on the ACT/SAT Concordance Table that was published in 2018. It is subject to change.

³The application evaluation system is based on the admission standards and academic credentials and includes an integrated analysis and use of a point system noted below:

- ▶ Academic Preparation and Performance (65%)
 - High school curriculum, GPA, and class rank
 - Standardized test scores
- ▶ High School and Community Engagement, Leadership, and Other Factors (25%)
 - Responses to application essay and questions
 - Recommendations from teacher and high school counselors
 - Alumni relationships
 - Extracurricular activities
 - Work experience
 - Exceptional talents
- ▶ Writing and Self-Expression (10%)
 - Application Essay
 - Additional writing samples

For more information, call the Student Information Hotline at 800.858.1840 (405.225.9239 in Oklahoma City), email studentinfo@osrhe.edu or visit OKcollegestart.org.

Independent College and University Admission Requirements

Course and grade requirements for independent institutions (not tax supported, nonprofit) vary, so check the Independent Institutions section of this book starting on page 53, or see your counselor.

CHOOSING THE RIGHT COURSES

Public Colleges and Universities

After you have been accepted to an Oklahoma state college or university, your academic adviser will help you get a good start by ensuring that you enroll in the right courses for your skill or knowledge level. Your ACT subject test scores in science, mathematics, reading and English will be reviewed.

Generally, if you scored a 19 or higher on a subject test, you will be placed in a college-level course for that subject area. If you scored below 19 on a subject test, your past academic record will be reviewed further or you may undergo additional testing in that area. If you are not entirely ready for college-level work, you will be provided support to increase your requisite knowledge in that specific content area. It is best to prepare for college while you are in high school, so when you get to college, you can focus your time and money on getting your college degree.

For more information, call the Student Information Hotline at 800.858.1840 (405.225.9239 in Oklahoma City), email studentinfo@osrhe.edu or visit OKcollegestart.org.

Independent Colleges and Universities

Course placement policies may differ for independent colleges and universities. Check with the institution you wish to attend for additional information.

TRANSFERRING

Public Colleges and Universities

During your college career, you may decide to transfer from one Oklahoma college or university to another. Information gathered by Oklahoma public colleges and universities indicates that, based on junior and senior level GPAs, transfer students perform comparable to students who stay at the same college or university. If you decide to transfer to a four-year university with an Associate in Arts or Associate in Science degree (two-year degrees), State Regents' policy ensures that these degrees will satisfy all general education requirements at the four-year university. If you transfer to another college before you complete an associate degree, your academic adviser can view your records and determine whether or not you qualify to participate in the "reverse transfer" process through which credit hours earned by students after transfer to another institution may be applied to certificate or degree requirements at a previously attended institution or institutions. If not, your general education courses can still be reviewed on a course-by-course basis for matches to those at the college to which you transferred.

To help you during the transfer process, course transfer information is posted at okcoursetransfer.org. All state colleges and universities (and most private institutions) participate in the Course Equivalency Project. This project provides course equivalency tables that list courses that will transfer among Oklahoma's public colleges and universities. Courses not listed as part of this project can still be reviewed on a case-by-case basis by the institution to which you are transferring. In addition, each degree-granting college or university lists the requirements for each of its degree programs and publicizes those requirements for use by all other colleges and universities so that you can plan ahead. For more information, visit okcoursetransfer.org, see your counselor, call the Student Transfer Hotline at 800.583.5883 (405.225.9163 in Oklahoma City) or check with the institution to which you plan to eventually transfer.

Independent Colleges and Universities

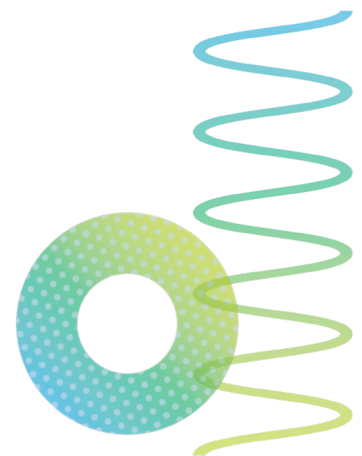
Transfer guidelines vary from institution to institution. Check with the institution you wish to attend for additional information about coursework transfer and transfer admission requirements. For more information, call the Student Information Hotline at 800.858.1840 (405.225.9239 in Oklahoma City), email studentinfo@osrhe.edu or visit OKcollegestart.org.

ACCREDITATION

The Higher Learning Commission accredits all Oklahoma public, and some independent, colleges and universities. An institution's accreditation may affect your ability to transfer courses, to utilize federal financial aid and your employment choices in the future. Check with the institution you plan to attend and ask about accreditation. For more information, call the Student Information Hotline at 800.858.1840 (405.225.9239 in Oklahoma City), email studentinfo@osrhe.edu or visit OKcollegestart.org.

INTERNATIONAL STUDENTS

Oklahoma extends a special invitation to international students to pursue higher education in our state. For more information about admissions requirements and English language requirements, visit okhighered.org/international-students.



WHAT IT COSTS

College expenses vary depending on the type of college or university, the number of courses a student takes, a student's major and his or her personal lifestyle, among other factors.

The chart below provides a comparison of estimated annual tuition and mandatory fees for an undergraduate resident student carrying 15 hours per semester at a public college or university during the 2023-24 academic year. For information about additional costs, such as academic service fees, food and housing, and books and supplies, review the Public Institution profile pages beginning on page 23 of this book. Though subject to change, listed costs can serve as a basis for estimating college expenses.

Independent colleges and universities (not tax supported, nonprofit) are generally more expensive than state colleges and universities, so review the independent college and university pages beginning on page 53 of this book, or check with your counselor for an estimate of costs.

2023-24 Estimated Student Costs for Resident Students at Oklahoma Public Colleges and Universities

	RESEARCH UNIVERSITIES	REGIONAL UNIVERSITIES	COMMUNITY COLLEGES	TECHNICAL BRANCHES
Tuition	\$5,243	\$6,082	\$3,476	\$4,236
Mandatory Fees	\$4,176	\$1,655	\$1,260	\$1,051
Total	\$9,419	\$7,737	\$4,736	\$5,287

A complete list of Oklahoma public college and university tuition and mandatory fees is available on [OKcollegestart.org](https://okcollegestart.org) under *Financial Aid Planning, Financial Aid 101, The Basics, Oklahoma Tuition Breakdown*.

MONEY FOR COLLEGE

College is an investment in your future that you should be planning for now. You are fortunate to live in Oklahoma, where state colleges and universities are among the most affordable in the nation. Plus, Oklahoma has many resources available to help you and your family plan for and manage the cost of earning a college degree.

Did you know that students attending Oklahoma public and independent (private) colleges and universities receive approximately \$1.5 billion in financial aid per year? There is a good chance you will qualify for financial aid!

Types of Financial Aid

Fortunately, there are many kinds of student financial aid to help you and your family manage the cost of college. While your high school guidance counselor can give you specific financial aid information, the following are some general sources of assistance.

Scholarships – awards given for a variety of reasons, such as good grades, special talents or career plans

Grants – aid that's generally based on financial need and that doesn't have to be repaid

Work-study (student employment) – money you earn for college by working part-time at the college or university you are attending or at an approved off campus worksite in the community

Loans – borrowed money that you must repay over time, with interest

Getting Financial Aid

To apply for federal financial aid (grants, work-study and loans) and the Oklahoma Tuition Aid Grant (OTAG) program, you should complete the Free Application for Federal Student Aid (FAFSA) as soon as the new form becomes available during your senior year of high school and each year you need aid in college. Call the financial aid office of the college(s) you plan to attend to learn about any additional forms they may require. The FAFSA is available online at [FAFSA.gov](https://fafsa.gov), and families are encouraged to use this method of application (step-by-step instructions are provided on the site). If you don't have the ability to complete the FAFSA online, you can download and print a paper copy that must be completed and mailed in to the processing center. The paper process takes more time and does not offer instant edits to help reduce the possibility of errors like the online process does. Remember, the first F in FAFSA stands for "free." Be wary of any organization that requires you to pay to fill out the FAFSA! Check out StartWithFAFSA.org and FAFSA.gov to access helpful information and tools for navigating the FAFSA process.

NOTE: Dependent students must report their parents' income and assets, as well as their own, on the FAFSA. Independent students report only their own income and assets (and those of a spouse, if married). See the FAFSA Dependency Questionnaire in the Resources section at StartWithFAFSA.org.

Tips for Scholarship Success

Set up an appointment with your school counselor to talk about your scholarship options. Many colleges post available scholarships on their websites. Check with the school you plan to attend to learn about scholarships they may offer. Select the Scholarship tab at UCanGo2.org to find a list of scholarships categorized by deadline date and category. You can also check out other websites that offer free resources and scholarship searches, including:

- ▶ OKcollegestart.org
- ▶ college-scholarships.com
- ▶ scholarships.com
- ▶ occf.org
- ▶ scholarships360.org
- ▶ studentscholarshipsearch.com

For helpful application tips and a list of specialized scholarships, download UCanGo2's **Scholarship Success Guide** at ucango2.org/publications/student/ScholarshipSuccessGuide.pdf.

Financial Aid Programs

There are numerous state programs to help you pay for college. Many of them are listed on the following pages. For more information, visit OKcollegestart.org or call the Student Information Hotline at 800.858.1840 or 405.225.9239 in Oklahoma City. For more information about federal financial aid options, including grants, work-study programs, loans, and loan forgiveness programs, visit studentaid.gov.

OKLAHOMA GRANTS

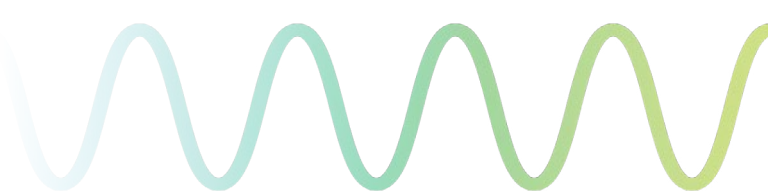
Oklahoma Tuition Aid Grant Program (OTAG)

OTAG is a need-based grant program for Oklahoma residents who attend approved colleges, universities and career technology centers in Oklahoma. Awards are approved for full-time or part-time undergraduate students. Learn more at OKcollegestart.org.

Oklahoma Tuition Equalization Grant (OTEG)

OTEG is a need-based grant program for Oklahoma residents enrolled as full-time undergraduates at Oklahoma not-for-profit, private/independent institutions of higher education. Learn more at OKcollegestart.org.

For more information about Oklahoma grant programs, call 800.858.1840 or 405.225.9456 (Oklahoma City area) or email studentinfo@osrhe.edu.



OKLAHOMA SCHOLARSHIPS & TUITION WAIVERS

Oklahoma's Promise

The Oklahoma's Promise program (formerly Oklahoma Higher Learning Access Program) was created by the Oklahoma Legislature to encourage more students to aspire for college, prepare themselves academically in high school and ultimately, earn college degrees. The Oklahoma's Promise scholarship covers tuition at any public college or university in the state for up to five years, until the completion of a bachelor's degree or a maximum of 129 semester credit hours. It will also pay a portion of the tuition at an accredited Oklahoma private college or at public career technology centers for certain programs that are eligible for federal financial aid. The scholarship amount does not include fees, books, supplies or food and housing. Eligibility requirements include:

- ▶ Student must be an Oklahoma resident and enroll in the program in 8th, 9th, 10th or 11th grade (home-schooled students age 13, 14, 15 or 16). The federal adjusted gross income (AGI) of the student's parents may not exceed \$60,000 for parents with 1-2 dependent children, \$70,000 for parents with 3-4 dependent children or \$80,000 for parents with 5 or more dependent children at the time of enrollment.
- ▶ Student must take certain courses and pass those courses with at least a 2.50 cumulative GPA. For a full description of required curriculum, visit okpromise.org/required-courses.shtml.
- ▶ Student must also achieve at least a 2.50 cumulative GPA for all courses in grades nine-12.
- ▶ Student must go to class regularly and do their homework.
- ▶ Student also agrees to stay out of serious trouble and away from drugs and alcohol.
- ▶ Student must be an Oklahoma resident at the time of high school graduation and must file a FAFSA to confirm that the federal adjusted gross income (AGI) of the student's parents does not exceed \$100,000 prior to receiving any program benefit. The family income will be checked each year the student is enrolled in college. For any year that the family income exceeds \$100,000, the student will not be eligible to receive the Oklahoma's Promise benefit. Student must be a U.S. citizen or lawfully present in the United States to receive the scholarship in college.
- ▶ Student must meet additional academic and conduct requirements to keep the scholarship after enrolling in college.

Learn more at okpromise.org.

Heroes Promise

House Bill 1343 became effective July 1, 2011, creating a special tuition scholarship for children of Oklahoma military personnel who were killed in action after Jan. 1, 2000. Learn more at okhighered.org/heroes.

Oklahoma National Guard Educational Assistance Program

The Oklahoma National Guard Educational Assistance Program was established by the Oklahoma Legislature in 2022 through SB 1418 to provide financial assistance to eligible members of the Oklahoma National Guard to attend public higher education institutions in Oklahoma. The assistance covers the amount of resident tuition,

mandatory fees and academic service fees for up to a maximum of 18 credit hours per semester. Undergraduate assistance is limited to 120 credit hours or completion of a bachelor's degree, and graduate assistance is limited to 40 credit hours or completion of a master's degree. Learn more at okhighered.org/national-guard.

Academic Scholars Program

The Academic Scholars Program was created and funded by the Oklahoma Legislature as an incentive for students of high academic ability to attend both public and private higher education institutions in Oklahoma. The program provides a four-year scholarship (eight semesters). Learn more at okhighered.org/academic-scholars.

Regional University Baccalaureate Scholarship

This scholarship enables 11 participating public universities to provide up to four years of scholarship support to academically promising Oklahoma students enrolled in a baccalaureate program. Participating regional universities are Cameron University, East Central University, Langston University, Northeastern State University, Northwestern Oklahoma State University, Oklahoma Panhandle State University, Rogers State University, Southeastern Oklahoma State University, Southwestern Oklahoma State University, University of Central Oklahoma, and the University of Science and Arts of Oklahoma. Learn more at okhighered.org/rubs.

Inspired to Teach

The Inspired to Teach program was established by the Oklahoma Legislature and the State Regents as an incentive to encourage the preparation of teachers in critical shortage areas in Oklahoma public schools. Inspired to Teach offers qualified Oklahoma students an opportunity to earn scholarships and benefits. Program participants may have the opportunity to earn up to \$25,500 as they complete their Educator Preparation Program and teach in Oklahoma. Learn more at inspired2teachok.org.

George and Donna Nigh Public Service Scholarship

The George and Donna Nigh Public Service Scholarship was established by the 1999 Oklahoma Legislature to provide scholarship opportunities to outstanding students who are preparing for careers in public service. A component of the scholarship program is participation in seminars about public service offered by the Nigh Institute. Oklahoma public colleges and universities and certain Oklahoma private colleges may nominate one scholarship recipient per year. Learn more at okhighered.org/nigh.

Scholars for Excellence in Child Care Program

The Scholars program awards scholarships to eligible child care professionals to complete coursework in the area of child development. These scholarships enable child care providers in Oklahoma to attend a technology center or community college to improve their skills through education. Learn more at okhighered.org/scholars.

For more information about Oklahoma scholarship programs, call 800.858.1840 or 405.225.9456 (Oklahoma City area) or email studentinfo@osrhe.edu.

TUITION WAIVERS

College-Awarded Tuition Waiver Scholarships

State Regents' policy authorizes each institution in the Oklahoma State System of Higher Education to provide for tuition waiver scholarships on the basis of financial need, scholastic aptitude and achievement, academic discipline or field of study, student activity participation and academic level. State system institutions are also required to waive resident tuition for individuals who meet specific criteria, as outlined in state statute.

State-Authorized Tuition Waivers

In addition to tuition waiver scholarships awarded by Oklahoma public colleges and universities, resident tuition will be waived fully or partially for the following:

- ▶ Senior citizens who wish to audit courses (may include a waiver of special fees and activity fees)
- ▶ POWs, MIAs and their dependents
- ▶ Dependents of peace officers and firefighters killed in the line of duty
- ▶ Exchange students on a reciprocal basis
- ▶ Graduate assistants, either resident or nonresident, with at least a one-quarter time graduate assistantship
- ▶ Academic Scholars Program awardees
- ▶ Regional University Baccalaureate Scholarship awardees
- ▶ Independent Living Act – Individuals in the former custody of the Department of Human Services who meet specific criteria
- ▶ Benefits-eligible employees at institutions in the Oklahoma State System of Higher Education

Learn more at OKcollegestart.org (search for "tuition waiver").

Independent Living Act (Foster Care Tuition Waiver)

The Independent Living Act was established by the 2000 Oklahoma Legislature to ensure that eligible individuals who have been or are in the foster care program of the Department of Human Services (DHS) receive services that include housing, medical coverage and education. Learn more at okhighered.org/independent-living.

OTHER OKLAHOMA ASSISTANCE PROGRAMS

Employer Tuition Assistance for Higher Education

Many agencies, organizations, institutions and businesses across Oklahoma provide tuition assistance benefits to help their employees pay for higher education. Types of education benefits for employees vary, and may include:

- ▶ Tuition payment assistance or reimbursement.
- ▶ Payment/reimbursement for licensing courses and exams.
- ▶ Matched contributions to employer-sponsored Oklahoma 529 plan.
- ▶ Student loan repayment.

To provide an additional resource for students and parents as they explore options to help cover college costs, the State Regents' website features a list of employers that offer tuition assistance benefits for employees that can be used at an Oklahoma public college or university. Learn more at okhighered.org/adult-students/tuition-assistance.

Oklahoma 529

Oklahoma 529 (formerly the Oklahoma 529 College Savings Plan) provides families with a smart, flexible way to save for their children's future. The plan offers a choice of investment options, tax advantages and the flexibility of using the savings at any qualified higher education institution both in the United States and abroad. Learn more at oklahoma529.com.

SREB Academic Common Market

The Academic Common Market (ACM) is an arrangement among Southern states allowing Oklahoma students to pay in-state tuition rates at out-of-state colleges or universities while studying in select programs not available at Oklahoma public institutions. The tuition savings to Oklahoma residents who participate in the ACM, as compared to those who enroll as out-of-state students, vary by institution. Learn more at okhighered.org/acm.

Teacher Shortage Employment Incentive Program (TSEIP)

TSEIP is a legislative ruling administered by the State Regents. TSEIP was designed to recruit and retain math and science teachers in Oklahoma. Successful candidates will be reimbursed toward eligible student loan expenses or an equivalent cash benefit upon fulfillment of certain requirements while still in college. Learn more at okhighered.org/otc/tseip.

TAX CREDITS

Federal American Opportunity and Lifetime Learning Tax Credits

If you're paying for your or your dependent's college education, there are two tax credits available for you – the American Opportunity Credit and the Lifetime Learning Credit.

The American Opportunity Credit can be claimed for each of the first four years of college or career technology school for classes that lead to a degree or recognized certificate. The student must be enrolled at least half-time to qualify for the American Opportunity Credit. The Lifetime Learning Credit is available for any postsecondary education, including graduate and professional school, and unlike the American Opportunity Credit, there is no minimum enrollment. If you qualify for both credits, it will usually be to your advantage to claim the American Opportunity Credit.

For more information, call the IRS Help Line at 800.829.1040; review IRS Publication 970, Tax Benefits for Higher Education, at irs.gov; or consult your tax adviser.



2023-24

COUNSELORS' RESOURCE BOOK

RESOURCES

COUNSELOR MATERIALS CALENDAR

July/August 2023

- ▶ Oklahoma's Promise Mailing

September 2023

- ▶ Preparing for College Materials Available Online for Download/Printing
- ▶ UCanGo2 College Planning and FAFSA High School Counselor Toolkits Available Online for Download/Printing

CONTACT INFORMATION

General Information

Oklahoma State Regents
for Higher Education
405.225.9100
counselorinfo@osrhe.edu

Concurrent Enrollment

Dr. Robert Placido
405.225.9145
rplacido@osrhe.edu

College Admission Requirements

Dr. Robert Placido
405.225.9145
rplacido@osrhe.edu

Cooperative Agreements

Angel Icenhour
405.225.9261
aicenhour@osrhe.edu

GEAR UP

Jolynn Horn
405.574.1388
jhorn@osrhe.edu

Educators Rising, Lead and Teach Oklahoma

Dr. Melissa Brevetti
405.225.9197
mbrevetti@osrhe.edu

OKcollegestart.org

Theresa Shaklee
405.234.4383
tshaklee@ocap.org

Oklahoma Money Matters

Kelli Kelnar
405.234.4313
kkelnar@ocap.org

Oklahoma's Promise

Carol Alexander
405.225.9160
calexander@osrhe.edu

Preparing for College Publications

Lauren Pettigrew
405.225.9180
lpettigrew@osrhe.edu

Student Financial Aid

Irala Magee
405.225.9378
imagee@osrhe.edu

Student Preparation

Annette Long
405.225.9156
along@osrhe.edu

Summer Academies

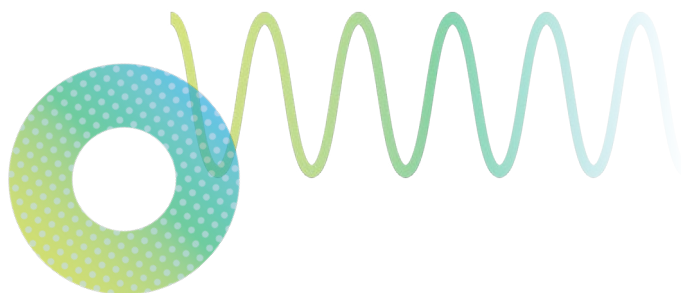
Annette Long
405.225.9156
along@osrhe.edu

UCanGo2

Kelli Kelnar
405.234.4313
kkelnar@ocap.org

Inspired to Teach and TSEIP

Dr. Goldie Thompson
405.225.9143
gthompson@osrhe.edu



OCAP RESOURCES



Oklahoma College Access Network (OK-CAN)

The Oklahoma College Assistance Program (OCAP) built OK-CAN to serve as a centralized hub for college access initiatives and service providers, including high school counselors and educators. OK-CAN provides a framework for participating members to collaborate on activities, materials, publications, tools and other resources to help more Oklahomans recognize that education after high school is within reach. Connect with OK-CAN at OKCollegeAccess.org.



UCanGo2

OCAP's college access initiative, UCanGo2, is a comprehensive outreach program to help students and parents plan, prepare and pay for education after high school. UCanGo2 provides free resources and services that empower educators, counselors, campus personnel and community partners to demonstrate the value of higher education, inspire confidence to support academic achievement and help families overcome barriers to educational access and success. Learn more at UCanGo2.org.



Ready Set Repay

Ready Set Repay provides information and tools for student loan borrowers and Oklahoma higher education institutions to help students make smart borrowing decisions and successfully repay their student loans. Visit the site at ReadySetRepay.org.



Oklahoma Money Matters

Oklahoma Money Matters (OKMM), OCAP and OSRHE's financial literacy initiative, offers counselors access to a wide variety of instructional materials and online tools, including money management guides, lesson plans, a resource clearinghouse, self-paced curriculum modules, an interactive budgeting tool and podcasts. Counselors can also engage through *Financial Friday*, an online, interactive question-and-answer forum they can share with students though email or the school's newsletter, social media pages and/or website. Email OklahomaMoneyMatters@ocap.org to learn more or sign up to receive *Financial Friday*.

SOCIAL MEDIA CONNECTIONS

Like us on Facebook

- ▶ Oklahoma State Regents for Higher Education facebook.com/OKhighered
- ▶ GEAR UP facebook.com/okgearup
- ▶ OKcollegestart facebook.com/OKcollegestart
- ▶ Oklahoma's Promise facebook.com/okpromise
- ▶ Oklahoma Money Matters facebook.com/OklahomaMoneyMatters
- ▶ Oklahoma Teacher Connection facebook.com/OklahomaTeacherConnection
- ▶ Reach Higher Oklahoma facebook.com/reachhigheroklahoma
- ▶ Ready Set Repay facebook.com/repaymentscoop
- ▶ UCanGo2 facebook.com/UCanGo2

Follow us on X/Twitter

- ▶ Oklahoma State Regents for Higher Education twitter.com/OKhighered
- ▶ OSRHE Chancellor twitter.com/OSRHEChancellor
- ▶ GEAR UP twitter.com/ok_gearup
- ▶ Oklahoma Money Matters twitter.com/OKMoneyMatters

Follow us on LinkedIn

- ▶ Oklahoma State Regents for Higher Education linkedin.com/company/oklahoma-state-regents-for-higher-education

Subscribe to our YouTube channels

- ▶ Oklahoma State Regents for Higher Education youtube.com/user/okhighered
- ▶ Oklahoma College Assistance Program youtube.com/user/okcollegeassistance

Follow us on Instagram

- ▶ GEAR UP instagram.com/ok_gearup

COUNSELORS' RESOURCE BOOK

SUMMARY LIST OF HELPFUL WEBSITES

Academic Scholars Program
okhighered.org/academic-scholars

Advanced Placement
okhighered.org/advanced-placement

College Scholarships
college-scholarships.com

Concurrent Enrollment
okhighered.org/concurrent-enrollment

Cooperative Agreements Project
okhighered.org/agreements

Educators Rising
okhighered.org/otc

Employer Tuition Assistance for
Higher Education
okhighered.org/adult-students/tuition-assistance

Fastweb Scholarship Search
fastweb.com

Federal Hope (American Opportunity) and
Lifetime Learning Tax Credits
irs.gov

Federal Student Aid ID (FSA ID)
studentaid.gov

Free Application for Federal Student Aid
(FAFSA)
[FAFSA.gov](https://fafsa.gov)

Gaining Early Awareness and Readiness
for Undergraduate Programs (GEAR UP)
okgearup.org

George and Donna Nigh
Public Service Scholarship
okhighered.org/nigh

Heroes Promise
okhighered.org/heroes

Independent Living Act
(Foster Care Tuition Waiver)
okhighered.org/independent-living

Inspired to Teach Program
inspired2teachok.org

International Students
okhighered.org/international-students

Lead Oklahoma (Formerly LEAP)
okhighered.org/otc

Mapping Your Future
mappingyourfuture.org

National Guard Tuition Waiver
okhighered.org/national-guard

OKcollegestart.org
OKcollegestart.org

Oklahoma City Community Foundation
occf.org

Oklahoma College Access Network
(OK-CAN)
OKCollegeAccess.org

Oklahoma College Assistance Program
ocap.org

Oklahoma 529
oklahoma529.com

Oklahoma Course Transfer
okcoursetransfer.org

Oklahoma Money Matters (OKMM)
OklahomaMoneyMatters.org

Oklahoma State Department of Education
sde.ok.gov

Oklahoma State Regents for Higher Education
okhighered.org

Oklahoma Tuition Aid Grant Program (OTAG)
otag.org

Oklahoma Tuition Equalization Grant
okhighered.org/oteg

Oklahoma Tuition Waivers
OKcollegestart.org
(search for "tuition waiver")

Oklahoma's Promise
(Oklahoma Higher Learning Access Program)
okpromise.org

Public Service Loan Forgiveness (PSLF)
studentaid.gov/manage-loans/forgiveness-cancellation/public-service

Regional University Baccalaureate Scholarship
okhighered.org/rubs

Ready Set Repay
ReadySetRepay.org

Scholars for Excellence in
Child Care Program
okhighered.org/scholars

Scholarships360
scholarships360.org

Scholarships.com
scholarships.com

Show What You Know Website
showwhatyouknowok.org

Spanish OSRHE Resources
okhighered.org/students/publications/espanol

SREB Academic Common Market
okhighered.org/acm

Start with FAFSA
StartWithFAFSA.org

Student Guide to Financial Aid
finaid.org

Student Preparation
okhighered.org/student-prep

Student Scholarship Search
studentscholarshipsearch.com

Teacher Loan Forgiveness Program
ReadySetRepay.org or studentaid.gov/manage-loans/forgiveness-cancellation/teacher

Teach Oklahoma (Formerly ACE)
okhighered.org/otc

Teacher Shortage Employment Incentive
Program (TSEIP)
cashforteachingok.org

UCanGo2
UCanGo2.org



OKCOLLEGESTART.ORG

OKcollegestart.org is Oklahoma's official website for college planning. The comprehensive site provides a one-stop shop for students, parents, adult learners and educators. It features information and tools that can help make planning and paying for college easier for students and their families.

OKcollegestart.org also includes a Professional Center where counselors can monitor students' progress through career exploration, college selection and financial aid completion.

Counselors can customize and assign an Individual Career Academic Plan (ICAP) for middle and high school students. ICAP activities include career and interest surveys, a resume builder and test score tracking tools. OKcollegestart.org also allows counselors to combine their calendars with students' and post reminders about upcoming events and deadlines to help keep students on track to meet their individual goals. In addition, the site gives counselors the ability to generate reports on students' progress to help identify gaps in students' college plans, such as a missing required course.

To participate in the Professional Center, counselors must first contact the Oklahoma State Regents for Higher Education at 405.234.4383 or OKcollegestart@ocap.org to receive an access code.

OKcollegestart.org for Students

OKcollegestart.org provides students the opportunity to create a lifelong portfolio for college and career planning that contains secure records of academic progress, activities and achievements throughout high school. Students have the option of simply browsing the site for college planning information or creating an account that is protected with a username and password for access to enhanced features, like completing Individual Career Academic Plans assigned by counselors, applying for Oklahoma's Promise and saving results from college searches and comparisons.

Career Planning

Students can use the *Career Planning* feature to find out how their unique attributes match up with certain occupations. With *Career Planning*, students can:

- ▶ Select *Learn About Yourself* to determine interests, discover careers they might want to consider, and learn about skills and work values.
- ▶ Select *Explore Careers* to search for careers by salary and career clusters or to look for specific careers. Students can also

access links to virtual campus tours for colleges and universities across the state.

- ▶ Select *Get a Job* to create resumes and thank-you letters, polish interview skills and get help finding a job.

High School Planning

The *High School Planning* feature contains information for students to create an academic plan of study and achieve success in high school. With *High School Planning*, students can:

- ▶ Select *Plan of Study* to plan high school courses and prepare to meet college and career pathway requirements. The student's plan of study is automatically saved within their portfolio, and students can compare their plan of study to college preparatory/ work-ready curriculum standards and core curriculum standards.
- ▶ Select *High School Planning Timeline* to find out what they should be doing each year of high school to prepare for college.
- ▶ Select *Succeeding in High School* to find helpful advice about getting and staying ahead, including homework helper websites.

College Planning

With the *College Planning* feature, students can research and identify Oklahoma college and university campuses that meet their needs, find out the requirements for college admission, research degree programs and more. With *College Planning*, students can:

- ▶ Select *Explore Postsecondary Schools* to find colleges and universities that best suit their goals. Students can use the *School Finder* to search for schools that match their needs from a comprehensive list of school characteristics; use the *College Matching Assistant* to search for schools by criteria such as size, location and majors; view campus attributes side-by-side with the *Compare Schools* tool; and locate schools near zip codes with the *Distance Search* tool.
- ▶ Select *Prepare for College* to choose the right courses to meet college requirements, plan out the steps to take during each year of high school and find out admission requirements for Oklahoma public colleges and universities. Students and families can also review concurrent enrollment requirements and guidelines.
- ▶ Select *Test Prep* to boost their test-taking confidence with modules that allow them to work at their own pace.
- ▶ Select *Explore Programs and Majors* to find degree programs that they might be interested in pursuing.
- ▶ Apply for the Oklahoma's Promise scholarship program.

Financial Aid Planning

The *Financial Aid Planning* feature provides students with information about current college costs and any additional expenses to consider when planning for college. This tab helps students and families learn about finding and applying for the four major types of financial aid — grants, loans, scholarships and work-study — and find out how to make paying for college a little easier. With *Financial Aid Planning*, students can:

- ▶ Select any of the Free Application for Federal Student Aid (FAFSA) links on OKcollegestart.org to be taken to the official website to complete the application. Students should complete the FAFSA as soon as the new form becomes available during their senior year of high school. By completing the application, students apply for funds awarded by most federal and state agencies. Even students who are not sure that they will need financial aid should fill out a FAFSA anyway — it's free!
- ▶ Select *Financial Aid 101* to learn the basics about applying, the FAFSA, financial aid packages, determining eligibility, college costs, types of financial aid and more.
- ▶ Select *Financial Aid Calculators* to get help determining the cost of college, college savings, loans, and scholarship amounts.
- ▶ Select *Find Scholarships* to search a database of over 20,000 scholarships, browse local scholarships entered by their school and other financial aid they might be eligible to receive. Students will build a "My Scholarship Profile" to match scholarships according to their ACT & SAT scores, GPA, any disabilities and a variety of special circumstances. In addition, students will receive alerts on their profile when a saved scholarship deadline is approaching and they can sign up to receive monthly email alerts when new scholarships match their profiles.
- ▶ Select *Financial Aid Wizard* to get a grip on their financial futures by building a plan that's just right for them.
- ▶ Select *Financial Fitness* to explore ways to manage money, a life skill that will help students meet financial obligations, avoid serious debt and use credit wisely.

Your Portfolio

The *Your Portfolio* feature of OKcollegestart.org allows students to create a personalized portfolio protected by a username and password. Students can personalize their portfolios by recording future goals, experiences and extracurricular activities, and they can see reviews or comments made to their portfolios. In addition, students can enter and store academic activity and achievement information. It is important that students keep this information up-to-date because it can be used to automatically fill in certain areas of online scholarships available on OKcollegestart.org. The *Your Portfolio* section includes the following features:

Career Planning Portfolio – Students can review saved careers and assessment results, getting ready for work information and saved work experiences.

High School Planning Portfolio – Students can update a personalized plan of study and high school results.

College Planning Portfolio – Students can update future educational plans and college preparation milestones. Students can find and input information about their postsecondary plans and experiences, test scores and lifelong education plans. Students can also explore colleges online and select campuses to add to *Your Portfolio*. This allows students and counselors to keep track of whether student coursework is matching up with required admission standards for different colleges and universities. Students may add or delete colleges from this list anytime.

Financial Aid Planning Portfolio – Students can review financial aid plans, locate a link to submit the FAFSA, and access saved scholarship searches.

Your Journal – Students can record ideas, questions and thoughts throughout the process of making plans for college.

Your Planning Milestones – Students can track progress on items they need to complete. These are milestones that advisers assigned and track to see students' progress.

Send and Receive Messages – Students can access a free OKcollegestart.org email account that can be used for college planning purposes, such as communicating with a school counselor or college.

Snapshots of Your Portfolio – Students can review past portfolio work – frozen in time. Whether students have started an assessment, or have completed an assessment, the work students do on OKcollegestart.org will automatically be saved within *Your Portfolio*.

Review and Manage Your Event Calendar – The calendar displays all upcoming events at student-specified colleges from individual portfolios. The calendar can also display upcoming local events added by the school counselor. Students can also add their own events and reminders.

Account Access Activity – Displays when students have accessed their accounts by date and time.

Parent/Guardian Access to Your Portfolio – Students can invite a parent or guardian to connect to *Your Portfolio*.

Merge Your Accounts – Allows students to merge multiple OKcollegestart.org accounts.

OKcollegestart.org for Parents

The *Parents* section of OKcollegestart.org provides links to detailed information about Oklahoma's Promise, ways to start saving money for a child's college education, a planning timeline to help students identify what they should be doing each year to prepare for college, homework helpers, scholarships, financial aid and more. The *Parents* section also allows parents to track the progress of their child's account on OKcollegestart.org.

OKcollegestart.org for Adult Learners

The *Adult Learner* section of OKcollegestart.org provides information about programs and majors, career comparisons, test prep, scholarships, creating resumes, thank-you letters and ways to polish job interview skills. In addition, the *Adult* section includes links to resources such as:

- ▶ Reach Higher, Oklahoma's Degree Completion Program
- ▶ Critical Occupations
- ▶ Adult Student Information
- ▶ Adult Learner Toolbox
- ▶ Show What You Know OK – Get Credit for Prior Learning
- ▶ Resources for Student Veterans and Active-Duty Military
- ▶ Transfer Student Information
- ▶ OKMM – Manage Your Money
- ▶ UpskillOK: Micro-credential Programs

OKcollegestart.org for Educators

The *Professional* section of OKcollegestart.org provides resources to help educators guide students on the path to college. Specifically, the *Professional* resource section includes links to:

- ▶ The *Professional Center*, the place for educators and counselors to access resources, customize ICAP templates, manage student accounts and more
- ▶ Scholarship Corner
- ▶ College Application Week
- ▶ Oklahoma FAFSA Data Portal
- ▶ Advanced Placement
- ▶ Concurrent Enrollment
- ▶ OKcollegestart.org Videos and Webinars, to watch instructional videos
- ▶ Order/View Preparing for College Materials Online

For more information, visit [OKcollegestart.org](https://www.okcollegestart.org) or call 405.234.4383 or 800.858.1840.

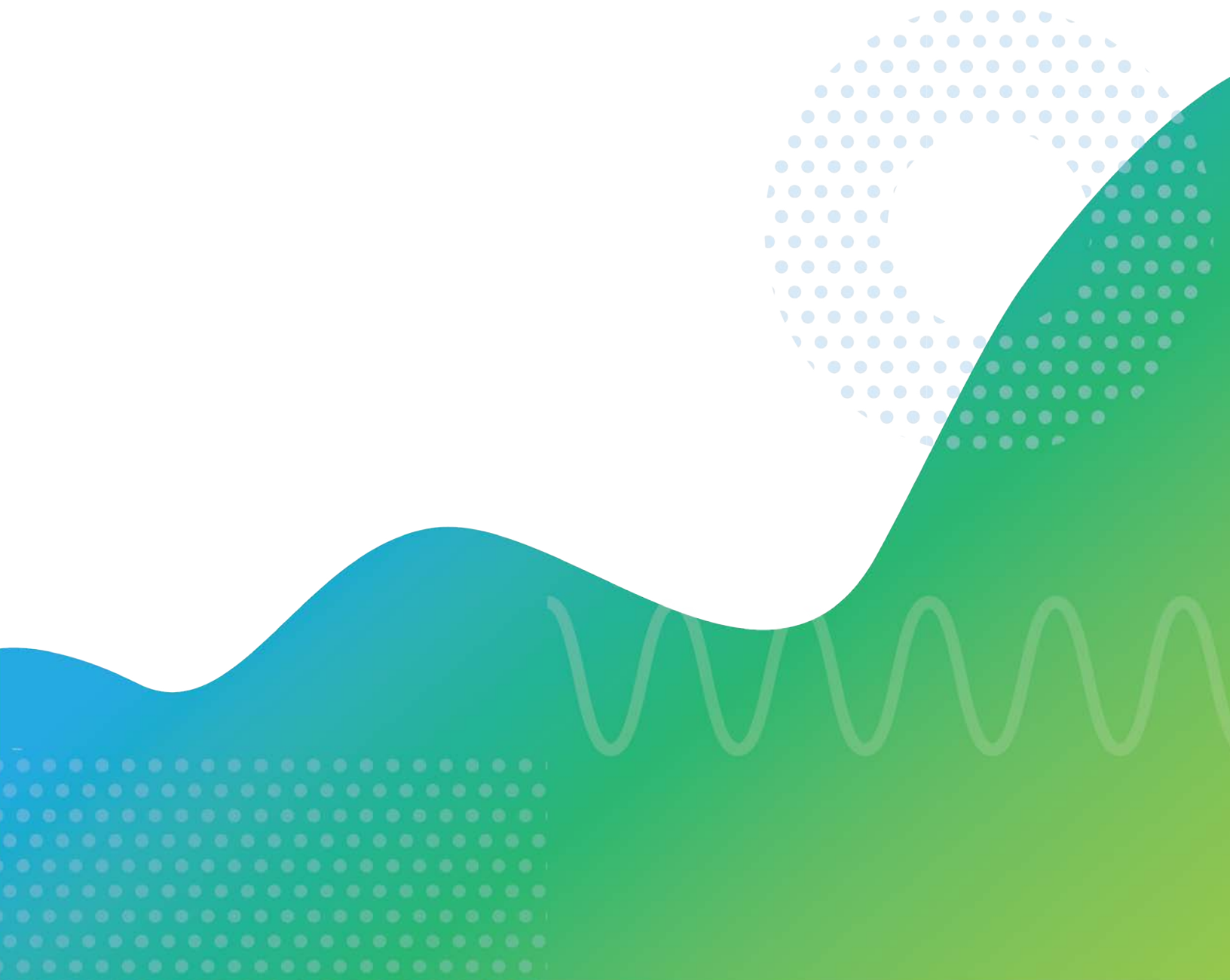


2023-24

COUNSELORS' RESOURCE BOOK

PUBLIC INSTITUTIONS

(Information provided by each campus)





GENERAL INFORMATION

Type of institution – Regional university
Other locations – Duncan
Support – State
Enrollment – 4,248
Student-faculty ratio – 20 to 1
Campus setting – Urban
FAFSA number – 3150

Located in Lawton, Cameron University serves students from around the globe, offering nearly 50 degrees through two-year, four-year and graduate programs. CU is committed to providing students a top-quality education from qualified faculty. Small class sizes provide an environment that emphasizes learning and student success.

ACADEMIC INFORMATION

Academic emphasis – Business, education, social sciences, and arts and sciences
Degree programs – cameron.edu/academics/degrees-majors

ADMISSIONS INFORMATION

Admissions – cameron.edu/admissions

HOUSING AND STUDENT LIFE INFORMATION

Housing – cameron.edu/housing
Student life/activities – cameron.edu/current-students/campus-life

COSTS

Tuition – \$5,220
Mandatory fees – \$1,680
Academic service fees – Varies depending on courses taken
Food and housing – \$6,280
Books and supplies – \$1,000

Note: Costs are calculated for an Oklahoma student carrying 15 hours in the fall and spring semesters (30 hours total for the academic year).

FINANCIAL AID

Average financial aid package – \$9,630

Application process – Complete the Free Application for Federal Student Aid (FAFSA) and the university scholarship application at cameron.edu/financial_aid/apply.

Application deadlines – Priority application date for the FAFSA is Dec.1; however, the FAFSA can be accepted throughout the academic year. Priority application date for university scholarships is Feb.1.

CONTACT INFORMATION

Office of Admissions
Cameron University
2800 W. Gore Blvd.
Lawton, OK 73505

Phone – 580.581.2289 or 580.581.2211
Toll free – 888.454.7600
Fax – 580.581.5514

Go2CU@cameron.edu
cameron.edu



(main campus and any official branch campuses and/or learning sites)

GENERAL INFORMATION

Type of institution – Community college
Other locations – Sallisaw and virtual (online) campus
Support – State
Enrollment – 2,218
Student-faculty ratio – 27 to 1
Campus setting – Rural
FAFSA number – 3176

Carl Albert State College is located in Poteau, Sallisaw, and online, with on-campus housing available at Poteau. A wide number of associate degrees and certificates are offered with several completely online. Classes are offered in a variety of times and formats to fit busy schedules.

ACADEMIC INFORMATION

Academic emphasis – Allied health, elementary education, business, transfer programs and general education
Degree programs – carlalbert.edu/academics
Special programs – Occupational health and safety, pre-sports medicine, overall transfer opportunities and partnerships with four-year institutions

ADMISSIONS INFORMATION

Admissions – carlalbert.edu/admissions

HOUSING AND STUDENT LIFE INFORMATION

Housing – carlalbert.edu/student-life/residential-life/
Student life/activities – carlalbert.edu/student-life/

COSTS

Tuition – \$3,000
Mandatory fees – \$1,230
Academic service fees – Varies depending on courses taken
Food and housing – \$4,400
Books and supplies – \$1,600

Note: Costs are calculated for an Oklahoma student carrying 15 hours in the fall and spring semesters (30 hours total for the academic year).

FINANCIAL AID

Average financial aid package – \$6,344
Application process – carlalbert.edu/admissions/financial-aid/
Application deadlines – N/A

CONTACT INFORMATION

Rachel Johnson
 Enrollment & Advisement Director, Carl Perkins Coordinator
 Carl Albert State College
 1507 S. McKenna
 Poteau, OK 74953
Phone – 918.647.1264
rajohnson@carlalbert.edu
carlalbert.edu



(main campus and any official branch campuses and/or learning sites)

GENERAL INFORMATION

Type of institution – Community college
Other locations – Three Rivers Port Campus, Muskogee
Support – State
Enrollment – 2,317
Student-faculty ratio – 16 to 1
Campus setting – Urban and rural
FAFSA number – 3153

Connors State College is a two-year, associate degree-granting institution, offering over 35 degree programs. With campuses in Warner and Muskogee, CSC provides a traditional college experience with convenient and flexible scheduling. Five varsity sports, competitive programs, clubs and student activities provide opportunities for all students to achieve excellence.

ACADEMIC INFORMATION

Academic emphasis – Transfer, general education, developmental education, occupational technical programs, continuing education and workforce development

Degree programs – connorsstate.edu

Special programs – CSC offers workforce-ready degrees in nursing, allied health, and business. The Muskogee Difference Scholarship Program for local nursing students is unprecedented and extremely beneficial to students, the institution and community. CSC's renowned agricultural and wildlife ecology programs take advantage of over 1,400 acres of ranch and wetlands for field learning and research. CSC also provides a variety of concurrent enrollment opportunities to area high school students.

ADMISSIONS INFORMATION

Admissions – connorsstate.edu/recruit

HOUSING AND STUDENT LIFE INFORMATION

Housing – connorsstate.edu/campuslife/housing

Student life/activities – connorsstate.edu/campuslife

COSTS

Tuition – \$3,000
Mandatory fees – \$1,650
Academic service fees – Varies depending on courses taken
Food and housing – \$5,204
Books and supplies – \$800

Note: Costs are calculated for an Oklahoma student carrying 15 hours in the fall and spring semesters (30 hours total for the academic year).

FINANCIAL AID

Average financial aid package – \$11,145

Application process – FAFSA.gov

Application deadlines – Preference date is March 31 for fall.

CONTACT INFORMATION

Jessica Langston
 Connors State College
 700 College Road
 Warner, OK 74469-2204

Phone – 918.463.6271

Fax – 918.203.3778

jessica.langston@connorsstate.edu
connorsstate.edu



(main campus and any official branch campuses and/or learning sites)



GENERAL INFORMATION

Type of institution – Regional university
Other locations – Ada
Support – State
Enrollment – 4,142
Student-faculty ratio – 20 to 1
Campus setting – Rural
FAFSA number – 3154

East Central University is a public university. ECU is located in Ada, a city of 17,000, approximately 90 miles from Oklahoma City, 115 miles from Tulsa and 150 miles from Dallas. We offer more than 70 degree options and 70 student organizations.

ACADEMIC INFORMATION

Academic emphasis – Liberal Arts and sciences
Degree programs – ecok.edu/academics/find-major-program
Special programs – N/A

ADMISSIONS INFORMATION

Admissions – ecok.edu/apply

HOUSING AND STUDENT LIFE INFORMATION

Housing – ecok.edu/housing
Student life/activities – ecok.edu/involvement

COSTS

Tuition – \$6,300
Mandatory fees – \$1,682
Academic service fees – \$485
Food and housing – \$6,500
Books and supplies – \$1,590

Note: Costs are calculated for an Oklahoma student carrying 15 hours in the fall and spring semesters (30 hours total for the academic year).

FINANCIAL AID

Average financial aid package – \$12,515

Application process – N/A

Application deadlines – Complete the FAFSA as soon after this date as possible to be considered for all financial aid programs. Dec. 10 and Feb. 1: Priority date for submitting scholarship application. June 1: Any additional documents requested by the Financial Aid Office must be submitted to be eligible for September disbursement of funds.

CONTACT INFORMATION

Office of Recruitment
East Central University
1100 E. 14th St.
Ada, OK 74820

Phone – 580.332.8000

ecutiger@ecok.edu

ecok.edu



(main campus and any official branch campuses and/or learning sites)



GENERAL INFORMATION

Type of institution – Community college
Other locations – McAlester, Idabel, Antlers
Support – State
Enrollment – 1,668
Student-faculty ratio – 14 to 1
Campus setting – Rural
FAFSA number – 3155

Eastern Oklahoma State College offers associate degree options and certification courses to prepare students to pursue a bachelor's degree or enter the workforce. Small class sizes provide a supportive environment and individual attention. Founded in 1908, Eastern has served students in southeastern Oklahoma for more than 100 years.

ACADEMIC INFORMATION

Academic emphasis – General education for transfer to four-year college/university, developmental education, continuing education, certification for immediate entry in workforce.

Degree programs – eosc.edu/degrees

Special programs – Ranch management-stock operations, forestry, meat processing and food safety, honors program, student support services

ADMISSIONS INFORMATION

Admissions – eosc.edu/apply

HOUSING AND STUDENT LIFE INFORMATION

Housing – eosc.edu/housing

Student life/activities – eosc.edu/campuslife

COSTS

Tuition – \$3,463
Mandatory fees – \$1,304
Academic service fees – Varies by courses taken
Food and housing – \$5,777
Books and supplies – \$1,285.51

Note: Costs are calculated for an Oklahoma student carrying 15 hours in the fall and spring semesters (30 hours total for the academic year).

FINANCIAL AID

Average financial aid package – \$4,730
Application process – eosc.edu/financialaid
Application deadlines – N/A

CONTACT INFORMATION

Office of Admissions
Eastern Oklahoma State College
1301 West Main
Wilburton, OK 74578
Phone – 918.465.2361
Toll free – 855.534.EOSC (3672)
admissions@eosc.edu
eosc.edu



(main campus and any official branch campuses and/or learning sites)

GENERAL INFORMATION

Type of institution – Regional university
Other locations – Oklahoma City, Tulsa, Ardmore
Support – State
Enrollment – 2,180
Student-faculty ratio – 18 to 1
Campus setting – Rural
FAFSA number – 3157

Langston University is a public historically black college enrolling a community of approximately 2,000 students. Recognized as a top institution of higher learning for affordability, LU ranked third among all HBCUs in the US. LU offers more than 40 associate, bachelor's, master's and doctoral programs across six academic colleges.

ACADEMIC INFORMATION

Academic emphasis – Agriculture, arts and sciences, business, education and behavioral sciences, nursing and allied health and physical therapy

Degree programs – langston.edu/academics/programs-centers

Special programs – langston.edu/academics/programs-centers/edwin-p-mccabe-honors-program

ADMISSIONS INFORMATION

Admissions – langston.edu/apply-now

HOUSING AND STUDENT LIFE INFORMATION

Housing – langston.edu/future-students/first-steps/housing-residential-life

Student life/activities – langston.edu/student-life/student-affairs/office-student-life

COSTS

Tuition – \$4,518
Mandatory fees – \$2,210
Academic service fees – \$240
Food and housing – \$10,258
Books and supplies – \$1,000

Note: Costs are calculated for an Oklahoma student carrying 15 hours in the fall and spring semesters (30 hours total for the academic year).

FINANCIAL AID

Average financial aid package – \$13,340

Application process – langston.edu/applyingforaid

Application deadlines – March 1

CONTACT INFORMATION

Office of Admissions, Recruitment & Outreach Services
 Langston University
 P.O. Box 667
 Langston, OK 73050

Phone – 405.466.2902

Toll free – 877.466.2231

luadmissions@langston.edu

langston.edu

langstonsports.com

langston.edu/future-students/first-steps



(main campus and any official branch campuses and/or learning sites)

GENERAL INFORMATION

Type of institution – Community college
Other locations – Ardmore
Support – State
Enrollment – 2,788
Student-faculty ratio – 24 to 1
Campus setting – Rural
FAFSA number – 3158

Murray State College provides opportunities for student learning, personal growth, professional success and community enhancement.

ACADEMIC INFORMATION

Academic emphasis – Technical programs and transfer programs
Degree programs – mscok.edu/future-students/degrees-programs
Special programs – Gunsmithing, custom gunmaking, veterinary nursing, OTA, PTA and nursing

ADMISSIONS INFORMATION

Admissions – mscok.edu/current-students/admissions-registrar

HOUSING AND STUDENT LIFE INFORMATION

Housing – mscok.edu/current-students/student-life/housing
Student life/activities – mscok.edu/current-students/student-life

COSTS

Tuition – \$4,200
Mandatory fees – \$960
Academic service fees – \$500
Food and housing – \$6,700
Books and supplies – \$1,726

Note: Costs are calculated for an Oklahoma student carrying 15 hours in the fall and spring semesters (30 hours total for the academic year).

FINANCIAL AID

Average financial aid package – \$5,991
Application process – FAFSA
Application deadlines – Priority Deadline: March 1

CONTACT INFORMATION

Office of Recruitment and Admissions
Murray State College
One Murray Campus
Tishomingo, OK 73460
Phone – Tishomingo: 580.387.7190
Ardmore: 580.319.0329

mscok.edu
online.mscok.edu



(main campus and any official branch campuses and/or learning sites)



GENERAL INFORMATION

Type of institution – Community college
 Other locations – Grove Center, Grove
 Support – State
 Enrollment – 2,228
 Student-faculty ratio – 24 to 1
 Campus setting – Rural
 FAFSA number – 3160

Nestled in far northeast Oklahoma, NEO is the largest residential two-year college in the state. NEO was founded in 1919 and seeks to be a national leader in rural, residential community college education by developing nationally competitive programs in academics, intercollegiate athletics, co-curricular activities, student development, and campus facilities.

ACADEMIC INFORMATION

Academic emphasis – Agricultural and mechanical college
 Degree programs – neo.edu/academics
 Special programs – N/A

ADMISSIONS INFORMATION

Admissions – neo.edu/admissions

HOUSING AND STUDENT LIFE INFORMATION

Housing – neo.edu/student-life/housing
 Student life/activities – neo.edu/student-life

COSTS

Tuition – \$3,000
 Mandatory fees – \$1,943
 Academic service fees – \$250
 Food and housing – \$6,550
 Books and supplies – \$2,160

Note: Costs are calculated for an Oklahoma student carrying 15 hours in the fall and spring semesters (30 hours total for the academic year).

FINANCIAL AID

Average financial aid package – \$6,495
 Application process – neo.edu/current-students/financial-aid/
 Application deadlines – neo.edu/current-students/financial-aid/

CONTACT INFORMATION

Recruitment
 Northeastern Oklahoma A&M College
 200 I Street NE
 Miami, OK 74354
 Phone – 918.542.8441 or 918.540.6201
 Fax – 918.542.9759
neorecruitment@neo.edu
fairwej@neo.edu
neo.edu
facebook.com/gogoneo



(main campus and any official branch campuses and/or learning sites)

GENERAL INFORMATION

Type of institution – Regional university
 Other locations – Muskogee and Broken Arrow
 Support – State
 Enrollment – 8,398
 Student-faculty ratio – 18 to 1
 Campus setting – Rural and Urban
 FAFSA number – 3161

Founded in 1846, Northeastern State University is Oklahoma's fourth largest regional institution. NSU offers traditional, online and blended classes in education, science and health professions, business and technology, and liberal arts. NSU also offers a doctorate of optometry, one of only 23 such programs in the nation.

ACADEMIC INFORMATION

Academic emphasis – Education, science and health professions, business and technology, liberal arts, and optometry.
 Degree programs – nsuok.edu/Academics/DegreesMajors/default.aspx
 Special programs – Graduate certificates, honors, ROTC, Reach Higher and Accelerated Degree Programs.

ADMISSIONS INFORMATION

Admissions – Go2NSU.com

HOUSING AND STUDENT LIFE INFORMATION

Housing – offices.nsuok.edu/housing/default.aspx
 Student life/activities – offices.nsuok.edu/engagement/StudentEngagement/default.aspx

COSTS

Tuition – \$6,623
 Mandatory fees – \$890
 Academic service fees – Varies by course; see list at offices.nsuok.edu/admissions/Admission/TuitionFees.aspx
 Food and housing – \$7,900
 Books and supplies – \$1,000

Note: Costs are calculated for an Oklahoma student carrying 15 hours in the fall and spring semesters (30 hours total for the academic year).

FINANCIAL AID

Average financial aid package – \$14,683
 Application process – offices.nsuok.edu/financialaid/StepstoApplyingforFederalAid.aspx
 Application deadlines – Applications are accepted throughout the year.

CONTACT INFORMATION

Director of Admissions, Recruitment & Scholarships
 Northeastern State University
 701 N Grand Ave
 Tahlequah, OK 74464
 Phone – 918.444.4675
 Toll free – 800.722.9614
 Fax – 918.458.2342
nicho003@nsuok.edu
nsuinfo@nsuok.edu
nsuok.edu



(main campus and any official branch campuses and/or learning sites)



NORTHERN
Oklahoma College

NORTHERN OKLAHOMA COLLEGE

T o n k a w a

GENERAL INFORMATION

- Type of institution – Community college
- Other locations – Enid and Stillwater
- Support – State
- Enrollment – 4,343
- Student-faculty ratio – 16 to 1
- Campus setting – Rural and Urban
- FAFSA number – 3162

Northern Oklahoma College, established in 1901, is a public, two-year community college with locations in Tonkawa, Enid and Stillwater. The multi-campus, land-grant institution provides high-quality, accessible and affordable educational opportunities and services to Oklahomans and others in the north and north-central regions of the state.

ACADEMIC INFORMATION

- Academic emphasis – Associate degree offerings
- Degree programs – noc.edu/academics/programs/degreeprograms
- Special programs – Selected courses via Online Live with Zoom Technology over the internet, pre-professional studies, advanced standing and college-level examination programs.

ADMISSIONS INFORMATION

- Admissions – noc.edu/admissions

HOUSING AND STUDENT LIFE INFORMATION

- Housing – noc.edu/students/current-students/residence-hall-life/
- Student life/activities – noc.edu/students/current-students/

COSTS

- Tuition – \$3,681
- Mandatory fees – \$1,110
- Academic service fees – N/A
- Food and housing – \$6,750
- Books and supplies – \$1,500

Note: Costs are calculated for an Oklahoma student carrying 15 hours in the fall and spring semesters (30 hours total for the academic year).

FINANCIAL AID

- Average financial aid package – \$4,426

Application process – Fill out the Free Application for Federal Financial Aid (FAFSA) and a scholarship application. Visit the financial aid page on the NOC website at noc.edu/students/future-students/financial-aid1 for more information and links to online applications.

Application deadlines – Applications are accepted throughout the year but the best consideration date for financial aid is Dec. 1.

CONTACT INFORMATION

Admissions Office
Northern Oklahoma College
1220 E. Grand Ave. (P.O. Box 310)
Tonkawa, OK 74653-0310

Phone – 580.628.6220 or 580.628.6200
Fax – 580.628.6209

recruiter1@noc.edu
recruiter2@noc.edu
noc.edu
noc.edu/enid
northok.publishpath.com/stillwater



(main campus and any official branch campuses and/or learning sites)



GENERAL INFORMATION

Type of institution – Regional university
Other locations – Enid and Woodward
Support – State
Enrollment – 2,168
Student-faculty ratio – 16 to 1
Campus setting – Rural
FAFSA number – 3412

Northwestern is a comprehensive regional university located in Alva, with additional locations in Enid and Woodward. Northwestern offers more than 40 degree programs, and a number of programs have received national recognition for academic excellence. Northwestern also is national leader in affordability and low student debt.

ACADEMIC INFORMATION

Academic emphasis – Education, business, nursing, liberal arts, pre-professional programs, social work and psychology
Degree programs – nwosu.edu/academic-degrees
Special programs – Doctor of Nursing Practice and online programs in business administration, accounting and nursing.

ADMISSIONS INFORMATION

Admissions – nwosu.edu/apply-for-admission

HOUSING AND STUDENT LIFE INFORMATION

Housing – nwosu.edu/living-on-campus
Student life/activities – nwosu.edu/student-life

COSTS

Tuition – \$6,810
Mandatory fees – \$653
Academic service fees – Varies by courses taken
Food and housing – \$5,040
Books and supplies – \$1,400

Note: Costs are calculated for an Oklahoma student carrying 15 hours in the fall and spring semesters (30 hours total for the academic year).

FINANCIAL AID

Average financial aid package – Varies by student eligibility and need. Scholarships as well as federal, state and institutional aid programs are available.

Application process – Complete FAFSA and university scholarship application.

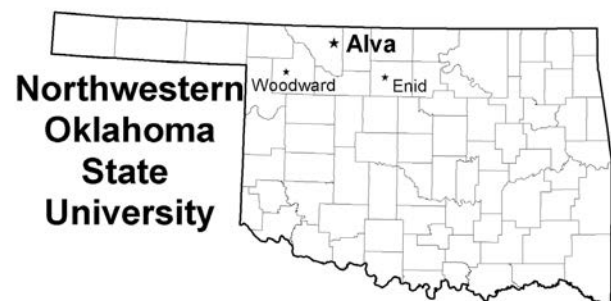
Application deadlines – May 15 for freshmen, July 15 for transfers.

CONTACT INFORMATION

Matt Adair
 Assistant Dean of Student Affairs and Recruitment
 Northwestern Oklahoma State University
 709 Oklahoma Blvd.
 Alva, OK 73717

Phone – 580.327.8546
Fax – 580.327.8413

wmadair@nwosu.edu
recruit@nwosu.edu
nwosu.edu



(main campus and any official branch campuses and/or learning sites)



GENERAL INFORMATION

Type of institution – Community college
Other locations – Capitol Hill Center, Family and Community Education Center, and Professional Development Institute
Support – State
Enrollment – 16,337
Student-faculty ratio – 18 to 1
Campus setting – Urban
FAFSA number – 10391

Oklahoma City Community College offers a full range of associate degree programs that prepare students to transfer to baccalaureate institutions, while other degree and certificate programs prepare students for immediate employment. At OCCC, students receive a quality education with small class sizes, dedicated professors and leadership opportunities.

ACADEMIC INFORMATION

Academic emphasis – Transfer programs, workforce development, allied health, engineering
Degree programs – occc.edu/catalog
Special programs – Nursing, engineering, cybersecurity, anesthesia tech

ADMISSIONS INFORMATION

Admissions – thinkoccc.com

HOUSING AND STUDENT LIFE INFORMATION

Student life/activities – occc.edu/studentlife

COSTS

Tuition – \$3,025
Mandatory fees – \$1,034
Academic service fees – Based on academic program
Food and housing – N/A
Books and supplies – \$1,600

Note: Costs are calculated for an Oklahoma student carrying 15 hours in the fall and spring semesters (30 hours total for the academic year).

FINANCIAL AID

Average financial aid package – \$14,673
Application process – FAFSA
Application deadlines – Varied

CONTACT INFORMATION

Recruitment and Admissions
Oklahoma City Community College
7777 S. May Ave.
Oklahoma City, OK 73159
Phone – 405.682.1611 or 405.682.6222
admissions2@occc.edu
pr@occc.edu
occc.edu
occc.edu/admissions



(main campus and any official branch campuses and/or learning sites)



GENERAL INFORMATION

Type of institution – Regional university
Other locations – N/A
Support – State
Enrollment – 1,675
Student-faculty ratio – 27 to 1
Campus setting – Rural
FAFSA number – 3174

Oklahoma Panhandle State University is a baccalaureate degree-granting institution established in 1909. Rooted in “Progress through Knowledge,” OPSU is committed to promoting excellence in the preparation of students for success in a global community.

ACADEMIC INFORMATION

Academic emphasis – College of Arts and Sciences; College of Arts and Education; and College of Business and Technology

Degree programs – opsu.edu/Academics

Special programs – 100% online degree programs offered in Business Administration and RN to BSN Nursing

ADMISSIONS INFORMATION

Admissions – opsu.edu/admissions-aid/

HOUSING AND STUDENT LIFE INFORMATION

Housing – opsu.edu/university-student-housing/

Student life/activities – opsu.edu/student-engagement/

COSTS

Tuition – \$4,950
Mandatory fees – \$3,550
Academic service fees – \$1,320
Food and housing – \$6,154
Books and supplies – \$582

Note: Costs are calculated for an Oklahoma student carrying 15 hours in the fall and spring semesters (30 hours total for the academic year).

FINANCIAL AID

Average financial aid package – \$13,915

Application process – Online; submit all necessary paperwork

Application deadlines – Nov. 15, Dec. 15, Feb. 1, March 1, April 1

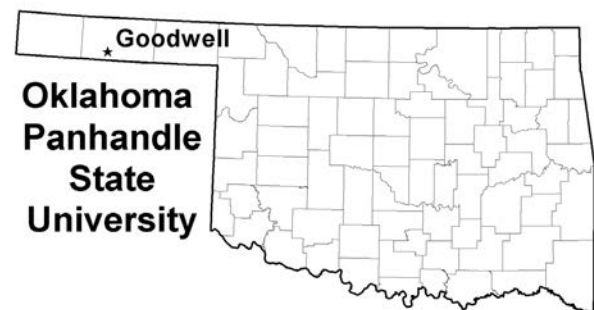
CONTACT INFORMATION

Oklahoma Panhandle State University
P.O. Box 430
Goodwell, OK 73939

Phone – 580.349.2611

Toll free – 800.664.OPSU (6778)

natasha.eidson@opsu.edu



(main campus and any official branch campuses and/or learning sites)



GENERAL INFORMATION

- Type of institution – Research university
- Other locations – Oklahoma City, Tulsa, Tahlequah and Okmulgee
- Support – State
- Enrollment – 27,273
- Student-faculty ratio – 23 to 1
- Campus setting – Rural
- FAFSA number – 3170

Through leadership and service, Oklahoma State University prepares students for a bright future and building a brighter world for all. OSU improves the lives of people in Oklahoma, the nation and the world through integrated teaching, research and outreach. OSU has students from all 50 states and more than 100 nations.

ACADEMIC INFORMATION

- Academic emphasis – Four-year academic institution
- Degree programs – go.okstate.edu/undergraduate-academics
- Special programs – Student-designed majors, double majors, independent study, accelerated program, honors program, Phi Beta Kappa, pass/fail grading option, internships and distance learning

ADMISSIONS INFORMATION

Admissions – admissions.okstate.edu

HOUSING AND STUDENT LIFE INFORMATION

- Housing – reslife.okstate.edu
- Student life/activities – lcl.okstate.edu

COSTS

- Tuition – \$5,417
- Mandatory fees – \$3,827
- Academic service fees – bursar.okstate.edu/tuition_fees/tuition_fees.html
- Food and housing – \$9,800
- Books and supplies – \$1,200

Note: Costs are calculated for an Oklahoma student carrying 15 hours in the fall and spring semesters (30 hours total for the academic year).

FINANCIAL AID

- Average financial aid package – \$14,155
- Application process – The application for admissions is also the application for scholarships at OSU. All students are encouraged to complete the FAFSA, regardless of financial situation.
- Application deadlines – The FAFSA opens in December or January. The exact date will be determined by the U.S. Department of Education. Students are encouraged to complete it as soon as possible after it is open. Nov. 1 is OSU's early opportunity scholarship deadline. Feb. 1 is the priority scholarship deadline, and the final scholarship deadline is the Friday before the first day of fall classes. The priority scholarship deadline for spring-entering students is Oct. 15, and the final deadline is the Friday before the first day of spring classes.

CONTACT INFORMATION

Office of Undergraduate Admissions
 Oklahoma State University
 219 Student Union
 Stillwater, OK 74078
 Phone – 405.744.5358
 Toll free – 800.233.5019, Ext. 1
 Fax – 405.744.7092
admissions@okstate.edu
okstate.edu
admissions.okstate.edu



(main campus and any official branch campuses and/or learning sites)



INSTITUTE OF TECHNOLOGY

GENERAL INFORMATION

- Type of institution – Research university branch campus
- Other locations – N/A
- Support – State
- Enrollment – 3,012
- Student-faculty ratio – 21 to 1
- Campus setting – Rural residential
- FAFSA number – 3172

Oklahoma State University Institute of Technology is Oklahoma’s only university of applied technology and considered an international pacesetter in collegiate technical education. Operating on a trimester system, OSUIT allows students to fast-track degree completion. Instruction is delivered through innovative programming to educate high-performance technicians needed in today’s globally competitive environments.

ACADEMIC INFORMATION

- Academic emphasis – World-class instruction in advanced technologies, awarding degrees to individuals seeking highly technical careers.
- Degree programs – osuit.edu/degrees

ADMISSIONS INFORMATION

- Admissions – osuit.edu/admissions

HOUSING AND STUDENT LIFE INFORMATION

- Housing – osuit.edu/reslife
- Student life/activities – osuit.edu/studentlife

COSTS

- Tuition – \$4,574
- Mandatory fees – \$1,200
- Academic service fees – View costs at osuit.edu/costs
- Food and housing – \$3,397
- Books and supplies – \$600

Note: Costs are calculated for an Oklahoma student carrying 15 hours in the fall and spring semesters (30 hours total for the academic year).

FINANCIAL AID

- Average financial aid package – \$6,500
- Application process – osuit.edu/financial-aid
- Application deadlines – N/A

CONTACT INFORMATION

- Office of Admissions
- Oklahoma State University Institute of Technology
- 1801 E. 4th St.
- Okmulgee, OK 74447
- Phone – 918.293.4680
- Toll free – 800.722.4471
- Fax – 918.293.4643
- information@okstate.edu
- osuit.edu



(main campus and any official branch campuses and/or learning sites)



OKLAHOMA CITY

GENERAL INFORMATION

- Type of institution – Community college
- Other locations – N/A
- Support – State
- Enrollment – 6,386
- Student-faculty ratio – 26 to 1
- Campus setting – Urban
- FAFSA number – 9647

Located in the heart of Oklahoma City, Oklahoma State University-Oklahoma City's driving purpose is to train students for employment and educate them to lead. Students can earn a Bachelor of Technology degree, Associate in Applied Science degree, Associate in Science degree or a certificate. OSU-OKC is accredited by the Higher Learning Commission.

ACADEMIC INFORMATION

- Academic emphasis – Bachelor of Technology, Associate in Applied Science, Associate in Science and certificates in selected technical areas
- Degree programs – osuokc.edu/academics/degrees
- Special programs – Select courses are offered as online courses in general and technical education.

ADMISSIONS INFORMATION

- Admissions – osuokc.edu/apply

HOUSING AND STUDENT LIFE INFORMATION

- Student life/activities – osuokc.edu/student-life

COSTS

- Tuition – \$3,899
- Mandatory fees – \$901
- Academic service fees – Varies according to schedule
- Food and housing – N/A
- Books and supplies – \$1,440

Note: Costs are calculated for an Oklahoma student carrying 15 hours in the fall and spring semesters (30 hours total for the academic year).

FINANCIAL AID

- Average financial aid package – \$3,673
- Application process – Complete FAFSA and scholarship application.
- Application deadlines – Scholarship deadline is March 1, and FAFSA priority deadline is May 31. (Completion of FAFSA by priority deadline is encouraged.)

CONTACT INFORMATION

- Recruitment & Admissions
- Oklahoma State University-Oklahoma City
- 900 N. Portland Ave.
- Oklahoma City, OK 73107
- Phone – 405.945.9150
- okc.info@okstate.edu
- osuokc.edu
- facebook.com/OSUOKC
- twitter.com/OSUOKC
- instagram.com/osu.okc



(main campus and any official branch campuses and/or learning sites)



TULSA

GENERAL INFORMATION

- Type of institution – Research university branch campus
- Other locations – N/A
- Support – State
- Enrollment – 2,562
- Student-faculty ratio – 17 to 1
- Campus setting – Urban
- FAFSA number – 3170

OSU-Tulsa is a branch of Oklahoma State University, a comprehensive research institution. The downtown campus offers junior-, senior- and graduate courses. Undergraduates complete their first two years at Tulsa Community College, other two- or four-year institutions or in Stillwater. Day, evening, online, hybrid and weekend classes available.

ACADEMIC INFORMATION

Academic emphasis – Aerospace administration, business, engineering, education, human sciences, health education and promotion and social sciences

Degree programs – tulsa.okstate.edu/programs

Special programs – OSU-Tulsa offers workforce-responsive academic and non-credit programs. Home to the OSU College of Professional Studies, OSU-Tulsa offers a bachelor’s degree in Public Safety in partnership with the Tulsa Police Department and a degree in Organizational Leadership designed to help currently employed students advance in their careers. The College Park partnership with Tulsa Community College offers a four-year public university experience in Tulsa, with TCC and OSU courses all taught on the OSU-Tulsa campus.

ADMISSIONS INFORMATION

Admissions – tulsa.okstate.edu/admission

HOUSING AND STUDENT LIFE INFORMATION

Student life/activities – tulsa.okstate.edu/campuslife

COSTS

- Tuition – \$5,417
- Mandatory fees – \$3,827
- Academic service fees – Varies by college
- Food and housing – N/A
- Books and supplies – \$1,500

Note: Costs are calculated for an Oklahoma student carrying 15 hours in the fall and spring semesters (30 hours total for the academic year).

FINANCIAL AID

Average financial aid package – Varies by student eligibility and need. Scholarships as well as federal, state and institutional aid programs are available.

Application process – Complete FAFSA and OSU admission application.

Application deadlines – Early consideration deadline: Nov. 1. Priority deadline: Feb. 1.

CONTACT INFORMATION

Prospective Student Services
Oklahoma State University-Tulsa
700 N. Greenwood Ave.
Tulsa, OK 74106

Phone – 918.594.8355
tulsa.info@okstate.edu
tulsa.okstate.edu
osuintulsa.com
tulsa.okstate.edu/future
collegeparktulsa.com



(main campus and any official branch campuses and/or learning sites)

GENERAL INFORMATION

Type of institution – Community college
Other locations – N/A
Support – State
Enrollment – 2,358
Student-faculty ratio – 25 to 1
Campus setting – Rural - residential and commuter
FAFSA number – 003156-00

Redlands Community College strives to help all students achieve their educational and career goals by offering affordable classes, smaller class sizes, numerous financial aid options, housing, and on-campus tutoring resources. Our curriculum is designed to easily transfer to four-year colleges or to lead students directly to the job market.

ACADEMIC INFORMATION

Academic emphasis – Offers associate degree programs designed to transfer to four-year institutions and workforce development programs to step directly into the workforce.

Degree programs – redlandsc.edu/academics/programs-study

Special programs – Concurrent high school enrollment, certificates, distance learning courses (internet, IETV, hybrid), TRIO (Student Support Svcs, Upward Bound, Veterans Upward Bound), NASNTI, Honors and Service Learning Programs, internships, Academic Center for Enhancement with free tutoring and writing assistance, and computer labs with internet access

ADMISSIONS INFORMATION

Admissions – redlandsc.edu/enrollment-information

HOUSING AND STUDENT LIFE INFORMATION

Housing – redlandsc.edu/life-redlands/student-housing

Student life/activities – redlandsc.edu/life-redlands/student-clubs-organizations

COSTS

Tuition – \$4,645
Mandatory fees – \$710
Academic service fees – Varies with enrollment
Food and housing – \$6,710
Books and supplies – \$1,500

Note: Costs are calculated for an Oklahoma student carrying 15 hours in the fall and spring semesters (30 hours total for the academic year).

FINANCIAL AID

Average financial aid package – \$3,689

Application process – Complete the Free Application for Federal Student Aid (FAFSA), available in the Financial Aid Office or via internet at studentaid.gov/h/apply-for-aid/fafsa and scholarship applications online at redlandsc.edu/scholarships.

Application deadlines – Priority FAFSA deadline is April 1, but applications taken year-round. Scholarship deadlines are March 1, unless otherwise noted.

CONTACT INFORMATION

Admissions and Advising Office
 Redlands Community College
 1300 S. Country Club Road
 El Reno, OK 73036-5304

Phone – 405.422.1417 or 405.262.2552

Fax – 405.422.1439

Admissions@redlandsc.edu

redlandsc.edu

redlandsc.edu/enrollment-information



(main campus and any official branch campuses and/or learning sites)

GENERAL INFORMATION

Type of institution – Regional university
Other locations – Bartlesville, Pryor and Tulsa (St. Francis-nursing)
Support – State
Enrollment – 3,854
Student-faculty ratio – 20 to 1
Campus setting – Traditional residential
FAFSA number – 3168

Rogers State University is recognized for high-quality academic programs provided with a personalized approach to student success. Academic programs include traditional courses of study offered alongside cutting-edge degrees in emerging fields. Modern, on-campus apartments and housing make RSU the Tulsa metro's only public four-year, residential university.

ACADEMIC INFORMATION

Academic emphasis – Notable areas of academic excellence include applied technology, biology, business administration, business information technology, chemical engineering, communications, community counseling, game development, justice administration, liberal arts, nursing, organizational leadership, public administration, social and behavioral sciences, sport management, and visual arts. Seven bachelor's degrees and seven associate degrees may be completed entirely online, as well as RSU's online MBA.

Degree programs – rsu.edu/degrees

Special programs – Academic and leadership opportunities available through the Honors Program, President's Leadership Class, Washington Center Internship Program and a studies-at-large program that has traveled to Italy, Wales, England and more.

ADMISSIONS INFORMATION

Admissions – rsu.edu/admissions

HOUSING AND STUDENT LIFE INFORMATION

Housing – rsu.edu/campus-life

Student life/activities – rsu.edu/campus-life/student-activities

COSTS

Tuition – \$5,010
Mandatory fees – \$2,910
Academic service fees – Varies depending on course taken
 See complete list at rsu.edu/tuition.
Food and housing – Starting at \$4,566
Books and supplies – Varies

Note: Costs are calculated for an Oklahoma student carrying 15 hours in the fall and spring semesters (30 hours total for the academic year).

FINANCIAL AID

Average financial aid package – \$6,730
Application process – Complete FAFSA and RSU Admission Application
Application deadlines – N/A

CONTACT INFORMATION

Office of Admissions
 Rogers State University
 1701 W. Will Rogers Blvd.
 Claremore, OK 74017
Phone – 918.343.7546
Toll free – 800.256.7511

admissions@rsu.edu
rsu.edu



(main campus and any official branch campuses and/or learning sites)

GENERAL INFORMATION

Type of institution – Community college
 Other locations – Tinker Air Force Base
 Support – State
 Enrollment – 8,907
 Student-faculty ratio – 24 to 1
 Campus setting – Urban
 FAFSA number – 9185

As a public, open admissions associate degree-granting institution, Rose State College provides higher education preparation for lifelong learning through programs and services designed to serve a diverse community.

ACADEMIC INFORMATION

Academic emphasis – Rose State College is known for its academic excellence, particularly in the health sciences and technology fields. Top programs include aerospace, dental, nursing science, radiologic technology, cyber security, engineering, family services and child development, business and paralegal, and Allied Health and Baccalaureate-Track Nursing.

Degree programs – rose.edu/content/academics/academic-divisions

Special programs – Cyber Security Program, Honors Program, adult degree completion, concurrent courses and personal enrichment classes

ADMISSIONS INFORMATION

Admissions – rose.edu/content/admissions-aid/,
 Concurrent enrollment: rose.edu/content/academics/student-resources/learning-resources-center/academic-outreach/concurrent-enrollment/

HOUSING AND STUDENT LIFE INFORMATION

Housing – rose.edu/residence-life

Student life/activities – rose.edu/student-activities

COSTS

Tuition – \$3,779
 Mandatory fees – \$1,252
 Academic service fees – Included in mandatory fees
 Food and housing – \$4,620-\$6,380
 Books and supplies – \$1,000

Note: Costs are calculated for an Oklahoma student carrying 15 hours in the fall and spring semesters (30 hours total for the academic year).

FINANCIAL AID

Average financial aid package – \$5,800

Application process – Complete FAFSA application for federal and state financial aid. Additional scholarship applications are available at rose.edu/scholarships.

Application deadlines – In general, a student must have a completed financial aid application on file with the Office of Student Financial Aid by June 1 for a fall semester and by Oct. 1 for a spring semester.

CONTACT INFORMATION

Office of Student Engagement
 Rose State College
 6420 S.E. 15th St.
 Midwest City, OK 73110-2799

Phone – 405.733.7372
 Toll free – 866.621.0987
 Fax – 405.736.0392

pstramski@rose.edu
rose.edu
rscraiders.com



(main campus and any official branch campuses and/or learning sites)



GENERAL INFORMATION

- Type of institution – Community college
- Other locations – N/A
- Support – State
- Enrollment – 1,952
- Student-faculty ratio – 22 to 1
- Campus setting – Rural
- FAFSA number – 3178

Seminole State College is a public two-year community college located in Seminole, approximately 45 miles from Oklahoma City. The 84-acre main campus is located at the northwestern edge of Seminole at 2701 Boren Blvd. Along with excellent academic programs, SSC offers a variety of student organizations, athletic programs and leadership opportunities.

ACADEMIC INFORMATION

Academic emphasis – SSC offers two-year associate degrees for students planning to transfer to four-year colleges or universities and associate degrees for students intending to enter directly into the workforce upon graduation.

Degree programs – sscok.edu/academics/degree-programs/index.html

Special programs – Nursing, Medical Laboratory Technology, Physical Therapy Assistant, 13 fully online degrees including LPN to RN

ADMISSIONS INFORMATION

Admissions – sscok.edu/admissions/index.html

HOUSING AND STUDENT LIFE INFORMATION

Housing – sscok.edu/life-at-ssc/housing/index.html

Student life/activities – sscok.edu/life-at-ssc/index.html

COSTS

- Tuition – \$3,210
- Mandatory fees – \$1,640
- Academic service fees – \$100
- Food and housing – \$7,470
- Books and supplies – \$1,200

Note: Costs are calculated for an Oklahoma student carrying 15 hours in the fall and spring semesters (30 hours total for the academic year).

FINANCIAL AID

Average financial aid package – \$7,895

Application process – Complete FAFSA (Free Application for Federal Student Aid) online.

Application deadlines – Priority deadline: July 1

CONTACT INFORMATION

Office of Admissions
Seminole State College
2701 Boren Blvd.
Seminole, OK 74868

Phone – 405.382.9230

admissions@sscok.edu
sscok.edu



(main campus and any official branch campuses and/or learning sites)

GENERAL INFORMATION

Type of institution – Regional university
Other locations – Idabel; Ardmore; Oklahoma City; Midwest City; Tinker AFB; McAlester; Denison, Texas
Support – State
Enrollment – 7,251
Student-faculty ratio – 27 to 1
Campus setting – Rural residential
FAFSA number – 3179

Southeastern is nationally known for its programs in aviation, education, occupational safety & health, and Native American leadership. It offers an online MBA and M.Ed. In addition, Southeastern offers graduate certificates in management, project management, data analytics, principal and superintendent.

ACADEMIC INFORMATION

Academic emphasis – Aviation, elementary education, online MBA and M.Ed, Native American studies, science, occupational safety and health
Degree programs – se.edu/academics
Special programs – Online MBA and M.Ed, Native American leadership master's, selected other programs via Internet, IETV or hybrid, Honors program, President's Leadership Class, teacher certification, licensed professional counseling

ADMISSIONS INFORMATION

Admissions – se.edu/admission/

HOUSING AND STUDENT LIFE INFORMATION

Housing – se.edu/hrl
Student life/activities – se.edu/student-life

COSTS

Tuition – \$6,600
Mandatory fees – \$600
Academic service fees – \$360
Food and housing – \$6,330
Books and supplies – \$1,000

Note: Costs are calculated for an Oklahoma student carrying 15 hours in the fall and spring semesters (30 hours total for the academic year).

FINANCIAL AID

Average financial aid package – \$12,408
Application process – se.edu/financial-aid
Application deadlines – se.edu/financial-aid/important-deadlines

CONTACT INFORMATION

Shelly Key
 Associate Vice President of Enrollment Management
 425 W. University Blvd.
 Durant, OK 74701-0609
Phone – 580.745.2061
skey@se.edu
se.edu



(main campus and any official branch campuses and/or learning sites)

GENERAL INFORMATION

Type of institution – Regional university
Other locations – Sayre and Yukon
Support – State
Enrollment – 5,648
Student-faculty ratio – 15 to 1
Campus setting – 50 minutes west of the Oklahoma City metro area on Interstate 40
FAFSA number – 3181

SWOSU maintains a rich tradition that includes strong academic programs, quality faculty and helpful support staff. Founded in 1901, SWOSU has 14 nationally accredited academic programs — the most among Oklahoma’s regional universities.

ACADEMIC INFORMATION

Academic emphasis – Arts and sciences, behavioral sciences and education, professional and graduate studies, business and technology, pharmacy, nursing, associate and applied programs

Degree programs – bulldog.swosu.edu/publications/catalog

Special programs – Pharmacy doctoral, health science, nursing, parks and wildlife law enforcement, wildland firefighting, teacher education, music therapy, physical and occupational therapy assistant

ADMISSIONS INFORMATION

Admissions – swosu.edu/admissions/index.aspx

HOUSING AND STUDENT LIFE INFORMATION

Housing – bulldog.swosu.edu/student-services/residence-life

Student life/activities – bulldog.swosu.edu/student-services/dean-students

COSTS

Tuition – \$6,969
Mandatory fees – \$876
Academic service fees – \$450
Food and housing – \$6,100
Books and supplies – \$1,200

Note: Costs are calculated for an Oklahoma student carrying 15 hours in the fall and spring semesters (30 hours total for the academic year).

FINANCIAL AID

Average financial aid package – \$8,786

Application process – Complete Free Application for Federal Student Aid and University Admissions Application.

Application deadlines – Complete the FAFSA as soon as it becomes available

CONTACT INFORMATION

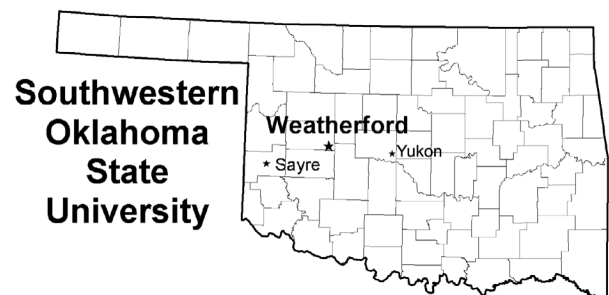
Admissions & Recruitment Office
 Taler Alexander, Salina Garza, Levi Melendy
 Director/Assistant Director/Recruiter
 Southwestern Oklahoma State University
 100 Campus Drive
 Weatherford, OK 73096

Phone – 580.774.3782

Fax – 580.774.7131

admissions@swosu.edu

swosu.edu



(main campus and any official branch campuses and/or learning sites)



GENERAL INFORMATION

Type of institution – Community college
Other locations – Metro Campus, 909 S. Boston; Northeast Campus, 3727 E. Apache; Southeast Campus, 10300 E. 81st St.; West Campus, 7505 W. 41st St.; Riverside Community Campus & Aviation Center, 112 W Beechcraft Drive; Owasso Community Campus, 10800 N. 140th E. Ave., Owasso
Support – State
Enrollment – 20,267
Student-faculty ratio – 15 to 1
Campus setting – Urban
FAFSA number – 9763

Tulsa Community College is Oklahoma's third-largest college. We offer an affordable option with small class sizes and expert faculty. Students save on average \$36,860 by starting at TCC when compared to the average four-year university. 65% of graduating students complete TCC debt free. We are focused on student success and offer 102 degrees or certifications to fit your goal of earning an associate degree, transferring to a four-year to earn a bachelor's degree, or completing a professional certification or credential. The Tulsa Achieves scholarship pays tuition and fees for eligible graduating high school seniors who live in Tulsa County.

ACADEMIC INFORMATION

Academic emphasis – Programs designed for four-year university transfer and work ready to step into the workforce. Courses offered: in-person, online, online live, and blended formats.

Degree programs – tulsacc.edu/programs-courses

Special programs – Aviation; Biotechnology; Dental Hygiene; Fire & EMS; Veterinary Technology; Tulsa Achieves; TRIO; Veteran Services; Honors Program; Academic Success Coaching; Education Outreach Center; Resource Center for the Deaf and Hard of Hearing; Accessibility Resources; Second Chance Corrections Education

ADMISSIONS INFORMATION

Admissions – tulsacc.edu/apply

HOUSING AND STUDENT LIFE INFORMATION

Student life/activities – tulsacc.edu/campus-life

COSTS

Tuition – \$3,497
Mandatory fees – \$894
Academic service fees – Varies
Food and housing – N/A
Books and supplies – \$2,310

Note: Costs are calculated for an Oklahoma student carrying 15 hours in the fall and spring semesters (30 hours total for the academic year).

FINANCIAL AID

Average financial aid package – \$10,987
Application process – tulsacc.edu/financialaid
Application deadlines – Preference for funding: June 1, Nov. 1 and April 1.

CONTACT INFORMATION

Admissions & Prospective Student Services
 Tulsa Community College
 6111 E. Skelly Drive
 Tulsa, OK 74135

Phone – 918.595.8000

admission@tulsacc.edu
tulsacc.edu
tulsacc.edu/visitcampus



(main campus and any official branch campuses and/or learning sites)



UNIVERSITY CENTER AT PONCA CITY

P o n c a C i t y

GENERAL INFORMATION

Type of institution – University center
Other locations – N/A
Support – State
Enrollment – 350
Student-faculty ratio – N/A
Campus setting – Rural
FAFSA number – N/A

The University Center at Ponca City is a higher education learning site that allows college degree programs from other state institutions available through distance learning. The UC offers multiple degree options and a variety of class times to meet the demands of our diverse student body.

ACADEMIC INFORMATION

Academic emphasis – Coursework for associate, bachelor's and master's degree programs in a wide variety of subjects. Coursework is delivered through distance education or live instruction so students can attend class locally to earn a degree from an Oklahoma college.

Degree programs – ucponcacity.com

Special programs – N/A

ADMISSIONS INFORMATION

Admissions – ucponcacity.com

COSTS

Tuition – UC students pay tuition at the institution where they are earning their degree.

Mandatory fees – UC students pay mandatory fees at the institution where they are earning their degree.

Academic service fees – UC students pay academic fees per credit hour of \$27.83, a \$20 badge fee and \$25 proctored test fee.

Food and housing – N/A

Books and supplies – N/A

Note: Costs are calculated for an Oklahoma student carrying 15 hours in the fall and spring semesters (30 hours total for the academic year).

FINANCIAL AID

Average financial aid package – N/A

Application process – ucponcacity.com

Application deadlines – Varies with institution

CONTACT INFORMATION

Academic Advisor
University Center at Ponca City
2800 N. 14th St.
Ponca City, OK 74601

Phone – 580.718.5600

Fax – 580.762.2315

robyn.armstrong@ucponcacity.com

ucponcacity.com



(main campus and any official branch campuses and/or learning sites)

GENERAL INFORMATION

Type of institution – Regional university
Other locations – Academy of Contemporary Music in Oklahoma City's Bricktown District; UCO at the Carnegie Center, UCO at Santa Fe Plaza
Support – State
Enrollment – 15,364
Student-faculty ratio – 17 to 1
Campus setting – Metropolitan
FAFSA number – 3152

With strong connections throughout the Oklahoma City metro, the University of Central Oklahoma is dedicated to developing in students the confidence to succeed through transformative learning experiences. Founded in 1890, Central connects its students to unmatched value found in hundreds of programs, internships and service opportunities unique to a metropolitan university.

ACADEMIC INFORMATION

Academic emphasis – Fine arts and design; business administration; education and professional studies; liberal arts; mathematics and science; graduate studies; undergraduate research; contemporary music; forensic science; leadership

Degree programs – uco.edu/programs

Special programs – 100% online degree programs, hybrid classes, ROTC, teacher certification, pre-professional studies, advanced standing, college-level examination programs and Doctor of Science (D.Sc.) in Forensic Science

ADMISSIONS INFORMATION

Admissions – uco.edu/admissions-aid

HOUSING AND STUDENT LIFE INFORMATION

Housing – uco.edu/student-resources/housing

Student life/activities – uco.edu/student-life

COSTS

Tuition – \$7,284
Mandatory fees – \$1,238
Academic service fees – \$1,636
Food and housing – \$8,850
Books and supplies – \$1,600

Note: Costs are calculated for an Oklahoma student carrying 15 hours in the fall and spring semesters (30 hours total for the academic year).

FINANCIAL AID

Average financial aid package – \$11,430

Application process – uco.edu/admissions-aid/financial-aid

Application deadlines – N/A

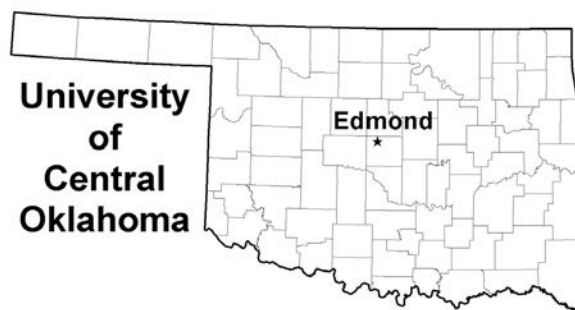
CONTACT INFORMATION

Broncho OneStop
 124 Nigh University Center
 Edmond, OK 73034
 8:30 a.m.-5 p.m. Monday, Tuesday
 9 a.m.-5 p.m. Wednesday
 8:30 a.m.-5 p.m. Thursday, Friday

Call Center (24/7) – 405.974.2727

Live Agent Chat/Help Center (24/7) – onestophelp.uco.edu

Website – uco.edu



(main campus and any official branch campuses and/or learning sites)



GENERAL INFORMATION

- Type of institution – Research university
- Other locations – Oklahoma City and Tulsa
- Support – State
- Enrollment – 31,580
- Student-faculty ratio – 14 to 1
- Campus setting – Suburban
- FAFSA number – 3184

Founded in 1890, the University of Oklahoma is a public research university located in Norman. OU's undergraduate population is just over 22,000, giving students a major university experience combined with a unique sense of community, focused on personalized success.

ACADEMIC INFORMATION

- Academic emphasis – Undergraduate, graduate, doctoral
- Degree programs – ou-public.courseleaf.com/academic-majors/
- Special programs – N/A

ADMISSIONS INFORMATION

- Admissions – ou.edu/admissions

HOUSING AND STUDENT LIFE INFORMATION

- Housing – ou.edu/housingandfood
- Student life/activities – ou.edu/studentlife

COSTS

- Tuition – \$5,070
- Mandatory fees – \$4,525
- Academic service fees – \$4,560
- Food and housing – \$14,608
- Books and supplies – \$800

Note: Costs are calculated for an Oklahoma student carrying 15 hours in the fall and spring semesters (30 hours total for the academic year).

FINANCIAL AID

- Average financial aid package – \$16,123
- Application process – ou.edu/admissions/affordability/financial-aid
- Application deadlines – ou.edu/sfc/dates-and-deadlines

CONTACT INFORMATION

- University of Oklahoma
Admissions and Recruitment
University of Oklahoma
550 Parrington Oval, L-1
Norman, OK 73019
- Phone – 405.325.2151
Toll free – 800.234.6868
- admissions@ou.edu
ou.edu/admissions



(main campus and any official branch campuses and/or learning sites)

GENERAL INFORMATION

Type of institution – Public liberal arts university
Other locations – N/A
Support – State
Enrollment – 979
Student-faculty ratio – 16 to 1
Campus setting – Rural
FAFSA number – 3167

Founded in 1908, the University of Science & Arts of Oklahoma is the state's liberal arts university. The university fosters diversity of thought and practice, preparing graduates to excel in today's world.

ACADEMIC INFORMATION

Academic emphasis – Liberal arts
Degree programs – usao.edu/academics
Special programs – Environmental science; Deaf education; fine arts; teacher certification; pre-professional studies in dental; medicine, nursing, pharmacy and veterinary; concurrent enrollment for high school students

ADMISSIONS INFORMATION

Admissions – usao.edu/future-students

HOUSING AND STUDENT LIFE INFORMATION

Housing – usao.edu/housing
Student life/activities – usao.edu/student-life

COSTS

Tuition – \$6,630
Mandatory fees – \$1,650
Academic service fees – \$720
Food and housing – \$9,344
Books and supplies – \$1,200

Note: Costs are calculated for an Oklahoma student carrying 15 hours in the fall and spring semesters (30 hours total for the academic year).

FINANCIAL AID

Average financial aid package – \$11,387
Application process – usao.edu/financial-aid
Application deadlines – usao.edu/scholarships

CONTACT INFORMATION

Admissions & Recruitment Office
University of Science & Arts of Oklahoma
1727 W. Alabama
Chickasha, OK 73018

Phone – 405.574.1306
Toll free – 800.933.8726

admissions@usao.edu
usao.edu



(main campus and any official branch campuses and/or learning sites)

GENERAL INFORMATION

Type of institution – Community college
Other locations – Elk City Nursing Campus,
 Lawton Nursing Campus
Support – State
Enrollment – 1,645
Student-faculty ratio – 23 to 1
Campus setting – Rural
FAFSA number – 3146

Western is located in Altus, a rural town of 20,000, that is home to Altus Air Force Base. Western was established in 1926 as Altus Junior College, and is the oldest original municipal community college still in existence in Oklahoma. Western combines a friendly, small-town atmosphere with cutting-edge technology.

ACADEMIC INFORMATION

Academic emphasis – Transfer programs (Associate in Arts and Associate in Science degrees); technical programs leading straight to work (Associate in Applied Science degree); Reach Higher (adult degree completion program)

Degree programs – wosc.edu/catalog

Special programs – Nursing, criminal justice and child development

ADMISSIONS INFORMATION

Admissions – wosc.edu/admissions

HOUSING AND STUDENT LIFE INFORMATION

Housing – wosc.edu/dorms

Student life/activities – wosc.edu/student-services

COSTS

Tuition – \$3,210
Mandatory fees – \$1,373
Academic service fees – Assessed based on the course
Food and housing – \$6,230
Books and supplies – Determined on a per course basis

Note: Costs are calculated for an Oklahoma student carrying 15 hours in the fall and spring semesters (30 hours total for the academic year).

FINANCIAL AID

Average financial aid package – \$5,553

Application process – wosc.edu/finaid

Application deadlines – Complete the FAFSA as soon as it becomes available. Scholarship application deadline is March 1 of each year for the following aid year.

CONTACT INFORMATION

Shelby Lucas
 Recruiter/Student Activities Specialist
 Western Oklahoma State College
 2801 N. Main St.
 Altus, OK 73521

Phone – 580.477.7845 or 580.477.2000
shelby.lucas@wosc.edu
recruiting@wosc.edu
wosc.edu
wosc.edu/enroll



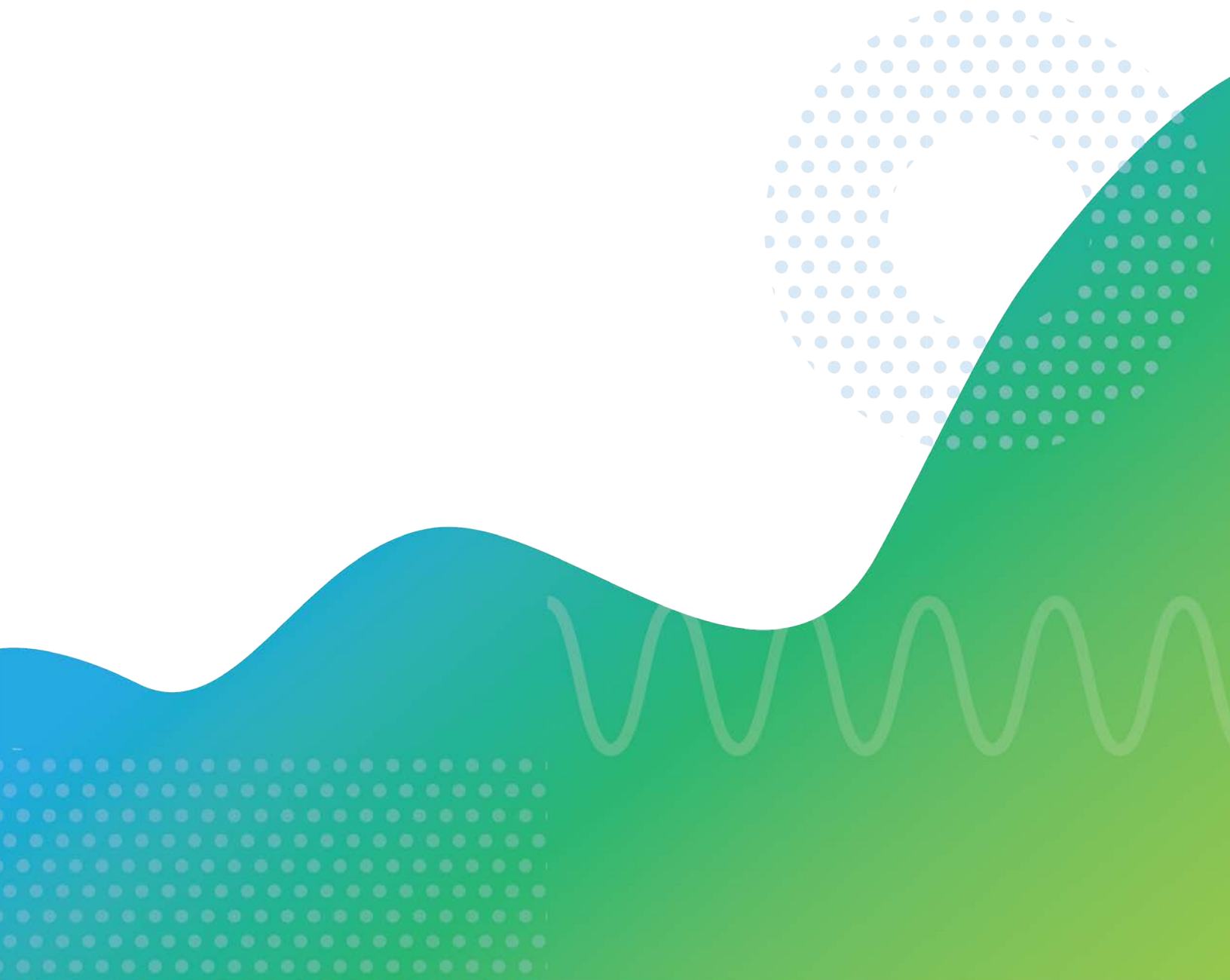
(main campus and any official branch campuses and/or learning sites)

2023-24

COUNSELORS' RESOURCE BOOK

INDEPENDENT INSTITUTIONS

(Private institutions accredited by the Higher Learning Commission; information provided by each campus)





GENERAL INFORMATION

Type of institution – Private/independent four-year college
Other locations – Muskogee, Oklahoma
Support – Private/independent
Enrollment – 981
Student-faculty ratio – 15 to 1
Campus setting – Rural
FAFSA number – 3147

Bacone College, related to the American Baptist Churches, USA, maintains its commitment to serving students within a culturally diverse community. The college, through its baccalaureate and associate degree programs, challenges students to develop intellectual and social skills, spiritual values and healthy lifestyles by providing quality education in a nurturing Christian environment.

ACADEMIC INFORMATION

Degree programs – bacone.edu/academics/

ADMISSIONS INFORMATION

Admissions – bacone.edu/admissions

HOUSING AND STUDENT LIFE INFORMATION

Housing – bacone.edu

Student life/activities – bacone.edu

COSTS

Tuition – \$15,000
Mandatory fees – \$2,700
Academic service fees – \$0
Food and housing – \$7,200
Books and supplies – \$1,000

Note: Costs are calculated for an Oklahoma student carrying 15 hours in the fall and spring semesters (30 hours total for the academic year).

FINANCIAL AID

Average financial aid package – \$20,000

Application process – Fill out FAFSA and scholarship application.

Application deadlines – July 15

CONTACT INFORMATION

Office of Admissions
Bacone College
2299 Old Bacone Rd.
Muskogee, OK 74403

Phone – 918.781.7340

admissions@bacone.edu

bacone.edu



(main campus and any official branch campuses and/or learning sites)



COLLEGE OF THE MUSCOGEE NATION

MVSKOKE ETVLVVY NAKCOKV MVHAKV SVHVLWECVT

COLLEGE OF THE MUSCOGEE NATION

O k m u l g e e

GENERAL INFORMATION

- Type of institution – Public two-year tribal college
- Other locations – N/A
- Support – Public/tribal
- Enrollment – 299
- Student-faculty ratio – 14 to 1
- Campus setting – Rural
- FAFSA number – 42249

College of the Muscogee Nation is a 1994 Tribal Land Grant Institution, located in Okmulgee, the capital of Muscogee (Creek) Nation. Along with excellent academic programs, CMN offers a variety of student organizations, cultural experiences and leadership opportunities. CMN is a member of the American Indian Higher Education Consortium.

ACADEMIC INFORMATION

- Academic emphasis – CMN offers two-year associate degrees for students planning to transfer to four-year colleges or universities and associate degrees for students planning to enter directly into the workforce upon graduation.
- Degree programs – cmn.edu/academics
- Special programs – Certificates in Gaming and Mvskoke Language Studies

ADMISSIONS INFORMATION

- Admissions – cmn.edu/admissions

HOUSING AND STUDENT LIFE INFORMATION

- Housing – cmn.edu/student-housing
- Student life/activities – cmn.edu/student-organizations

COSTS

- Tuition – \$4,395
- Mandatory fees – \$555
- Academic service fees – N/A
- Food and housing – \$6,030
- Books and supplies – \$1,600

Note: Costs are calculated for an Oklahoma student carrying 15 hours in the fall and spring semesters (30 hours total for the academic year).

FINANCIAL AID

- Average financial aid package – \$13,747
- Application process – cmn.edu/financial-aid
- Application deadlines – Complete the FAFSA as soon as it becomes available

CONTACT INFORMATION

- Office of Admissions
- College of the Muscogee Nation
- 2170 Raven Circle
- Okmulgee, OK 74447
- Phone – 918.549.2847
- Fax – 405.759.6941
- admissions@cmn.edu
- cmn.edu



(main campus and any official branch campuses and/or learning sites)

GENERAL INFORMATION

Type of institution – Private/independent four-year university
Other locations – North OKC, 11600 N. Broadway Extension
Support – Private/independent
Enrollment – 1,675
Student-faculty ratio – 11 to 1
Campus setting – Urban
FAFSA number – 6942

Founded in 1953, Mid-America Christian University is a four-year Christian liberal arts college located in the vibrant and growing Oklahoma City metro. MACU's vision is to "Prepare People to Do Greater Things for God and His Kingdom" and offers a variety of majors leading to associate, bachelor's and master's degrees.

ACADEMIC INFORMATION

Academic emphasis – Ministry, teacher education, business, psychology and counseling, English, math and science, social science, criminal justice, general education

Degree programs – macu.edu

Special programs – N/A

ADMISSIONS INFORMATION

Admissions – macu.edu/admissions/

HOUSING AND STUDENT LIFE INFORMATION

Housing – macu.edu/student-life/residential-life-and-housing/

Student life/activities – macu.edu/student-life/

COSTS

Tuition – \$17,568
Mandatory fees – \$1,270
Academic service fees – \$0
Food and housing – \$4,456
Books and supplies – \$1,500

Note: Costs are calculated for an Oklahoma student carrying 15 hours in the fall and spring semesters (30 hours total for the academic year).

FINANCIAL AID

Average financial aid package – \$19,649

Application process – apply.macu.edu

Application deadlines – Dec. 1 for priority acceptance

CONTACT INFORMATION

Office of Admissions
Mid-America Christian University
3500 S.W. 119th St.
Oklahoma City, OK 73170

Phone – 405.692.3281

Fax – 405.692.3172

admissions@macu.edu
macu.edu



(main campus and any official branch campuses and/or learning sites)

GENERAL INFORMATION

Type of institution – Private/independent four-year university
Other locations – N/A
Support – Private/independent
Enrollment – 1,399
Student-faculty ratio – 15 to 1
Campus setting – Urban
FAFSA number – 3164

Oklahoma Baptist University is a Christian liberal arts university, Oklahoma's top-ranked regional college by U.S. News. With more than 80 areas of study, four master's degrees, certificate programs and ample opportunities to work and study abroad, OBU delivers a top-notch education grounded in a Christian worldview.

ACADEMIC INFORMATION

Academic emphasis – A strong liberal arts curriculum providing a well-rounded education and developing critical and analytical thinkers.

Degree programs – okbu.edu/catalog/programs/index

Special programs – N/A

ADMISSIONS INFORMATION

Admissions – okbu.edu/admissions

HOUSING AND STUDENT LIFE INFORMATION

Housing – okbu.edu/student-life/student-housing/index.html

Student life/activities – okbu.edu/student-life/index

COSTS

Tuition – \$30,340
Mandatory fees – \$3,710
Academic service fees – NA
Food and housing – \$8,430
Books and supplies – Varies

Note: Costs are calculated for an Oklahoma student carrying 15 hours in the fall and spring semesters (30 hours total for the academic year).

FINANCIAL AID

Average financial aid package – \$24,183

Application process – okbu.edu/financial-aid/index

Application deadlines – okbu.edu/financial-aid/faqs

CONTACT INFORMATION

Kalyn Fullbright
Director of Admissions
Oklahoma Baptist University
500 W. University
Shawnee, OK 74804

Phone – 405.585.5000

admissions@okbu.edu

okbu.edu



(main campus and any official branch campuses and/or learning sites)

GENERAL INFORMATION

Type of institution – Private/independent four-year university
Other locations – Oklahoma City, Oklahoma / Vienna, Austria
Support – Private/independent
Enrollment – 2,153
Student-faculty ratio – 13 to 1
Campus setting – Urban
FAFSA number – 3165

OC's expert professors teach from a Christian worldview and are fiercely dedicated to high standards of scholarship. Our close-knit community creates a culture where students, faculty, and staff go the extra mile for each other.

ACADEMIC INFORMATION

Academic emphasis – Biblical studies, business, chemistry, computer science, engineering, gaming and animation, behavioral and social sciences, education, humanities, nursing, pre-med

Degree programs – oc.edu/academics

Special programs – RN to BSN; Alternative Teacher Certification for Paraprofessionals; Academy of Alternative Teacher Certification; Trauma Informed Certification; Medical Lab Science Certification; Ministry certificates in Children's Ministry, Youth Ministry or Family Ministry; and Business certificates in Digital Marketing, Leadership, Project Management, Health Services Management, Human Resources Management and Financial Management

ADMISSIONS INFORMATION

Admissions – oc.edu/admissions

HOUSING AND STUDENT LIFE INFORMATION

Housing – oc.edu/student-life/housing

Student life/activities – oc.edu/student-life

COSTS

Tuition – \$24,550
Mandatory fees – \$1,350
Academic service fees – Range from \$25 to \$400
Food and housing – \$8,680
Books and supplies – \$1,200

Note: Costs are calculated for an Oklahoma student carrying 15 hours in the fall and spring semesters (30 hours total for the academic year).

FINANCIAL AID

Average financial aid package – \$12,650
oc.edu/costs

CONTACT INFORMATION

Admissions Office
 Oklahoma Christian University
 2501 E. Memorial Road
 Oklahoma City, OK 73013

Phone – 405.425.5050
Toll free – 800.877.5010

admissions@oc.edu
oc.edu
oc.edu/visit



(main campus and any official branch campuses and/or learning sites)

GENERAL INFORMATION

Type of institution – Private/independent four-year university
 Other locations – N/A
 Support – Private/independent
 Enrollment – 2,550
 Student-faculty ratio – 9 to 1
 Campus setting – Urban
 FAFSA number – 3166

Oklahoma City University is listed as one of the best schools in the country in the National University category, according to the annual independent rankings released by the U.S. News & World Report.

ACADEMIC INFORMATION

Academic emphasis – Liberal arts university
 Degree programs – okcu.edu/academics/home
 Special programs – okcu.edu/academics/programs

ADMISSIONS INFORMATION

Admissions – okcu.edu/admissions/home

HOUSING AND STUDENT LIFE INFORMATION

Housing – okcu.edu/campus/home
 Student life/activities – okcu.edu/campus/residencelife

COSTS

Tuition – \$28,936
 Mandatory fees – \$4,650
 Academic service fees – N/A
 Food and housing – \$10,248
 Books and supplies – \$1,500

Note: Costs are calculated for an Oklahoma student carrying 15 hours in the fall and spring semesters (30 hours total for the academic year).

FINANCIAL AID

Average financial aid package – \$21,476
 Application process – okcu.edu/financialaid/home
 Application deadlines – okcu.edu/financialaid/deadlines

CONTACT INFORMATION

Office of Undergraduate Admissions
 Oklahoma City University
 2501 N. Blackwelder Ave.
 Oklahoma City, OK 73106
 Phone – 405.208.5050
 Toll free – 800.633.7242, ext. 1
 Fax – 405.208.5916
admissions@okcu.edu
okcu.edu



(main campus and any official branch campuses and/or learning sites)



OKLAHOMA WESLEYAN UNIVERSITY

Bartlesville

GENERAL INFORMATION

Type of institution – Private/independent four-year university
 Other locations – N/A
 Support – Private/independent
 Enrollment – 1,100
 Student-faculty ratio – 9 to 1
 Campus setting – Suburban
 FAFSA number – 3151

Oklahoma Wesleyan University is an educational leader in Oklahoma and beyond with national recognition from U.S. News and World Report, Forbes.com, and CBS News MoneyWatch for its excellent academic reputation and its missional integrity. OKWU is a four-year, Christian liberal arts and sciences university accredited by the Higher Learning Commission.

ACADEMIC INFORMATION

Academic emphasis – Christian liberal arts and sciences
 Degree programs – okwu.edu/majors
 Special programs – Graduate and Professions Studies: okwu.edu/academics/gps, High School concurrent enrollment: okwu.edu/academics/prep

ADMISSIONS INFORMATION

Admissions – okwu.edu/residential/admissions

HOUSING AND STUDENT LIFE INFORMATION

Housing – okwu.edu/campus-life/campus-housing
 Student life/activities – okwu.edu/campus-life

COSTS

Tuition – \$29,698
 Mandatory fees – \$2,430
 Food and housing – \$9,630
 Books and supplies – \$1,240

Note: Costs are calculated for an Oklahoma student carrying 15 hours in the fall and spring semesters (30 hours total for the academic year).

FINANCIAL AID

Average financial aid package – Varies by student program, eligibility, and need. Scholarships as well as federal, state, and institutional aid programs are available.

Application process – 1) Submit the FAFSA, currently scheduled for release December 2023. 2) Apply and be admitted. 3) Financial aid eligibility reviewed, and aid offer notification is emailed.

Application deadlines – Complete the FAFSA as soon as possible for best consideration for other scholarship, grant, and work-study awarding.

CONTACT INFORMATION

OKWU Admissions
 Oklahoma Wesleyan University
 2201 Silver Lake Road
 Bartlesville, OK 74006

Phone – 918.335.6828
 Toll free – 800.468.6292

info@okwu.edu
okwu.edu



(main campus and any official branch campuses and/or learning sites)

GENERAL INFORMATION

Type of institution – Private/independent four-year college
Other locations – N/A
Support – Private/independent
Enrollment – 5,051
Student-faculty ratio – 17 to 1
Campus setting – Urban
FAFSA number – 3985

Founded to educate the whole person - spirit, mind and body - ORU promises a thorough education in the context of a vibrant Christ-centered community. Strengthened in their purpose to become Whole Leaders for the Whole World. ORU has 80 bachelor's degree programs, as well as 16 master's-level programs and five doctoral degrees.

ACADEMIC INFORMATION

Academic emphasis – Whole Person Spirit-Empowered Education in Multiple Disciplines
Degree programs – oru.edu/academics/explore-majors
Special programs – oru.edu/virtual

ADMISSIONS INFORMATION

Admissions – oru.edu/admissions

HOUSING AND STUDENT LIFE INFORMATION

Housing – oru.edu/life-at-oru/housing-and-dining/index.php
Student life/activities – oru.edu/life-at-oru/index.php

COSTS

Tuition – \$32,500
Mandatory fees – \$1,600
Academic service fees – \$330
Food and housing – \$9,400
Books and supplies – \$1,920

Note: Costs are calculated for an Oklahoma student carrying 15 hours in the fall and spring semesters (30 hours total for the academic year).

FINANCIAL AID

Average financial aid package – \$43,850
Application process – Submit FAFSA at FAFSA.gov.
Application deadlines – Priority financial aid deadline: March 1.

CONTACT INFORMATION

Undergraduate Admissions
 Oral Roberts University
 7777 S. Lewis Ave.
 Tulsa, OK 74171
Phone – 918.495.6518
admissions@oru.edu
oru.edu



(main campus and any official branch campuses and/or learning sites)

GENERAL INFORMATION

Type of institution – Private/independent four-year university
Other locations – Tulsa
Support – Private/independent
Enrollment – 2,107
Student-faculty ratio – 16 to 1
Campus setting – Suburban residential
FAFSA number – 3149

Southern Nazarene University's mission is to make Christ-like disciples through higher education. As a Christian community of scholars, SNU models the hospitality of grace, the pursuit of truth and the practice of discipleship, all within the Wesleyan Holiness tradition.

ACADEMIC INFORMATION

Academic emphasis – Liberal arts
Degree programs – snu.edu/academics
Special programs – Online courses, honors program, off-campus study programs, international student program, teacher certification, College-Level Examination Programs, Quetzal Education Research Center (Costa Rica)

ADMISSIONS INFORMATION

Admissions – snu.edu/admissions

HOUSING AND STUDENT LIFE INFORMATION

Housing – snu.edu/housing-residence-life
Student life/activities – snu.edu/snu-life

COSTS

Tuition – \$28,000
Mandatory fees – \$1,600
Academic service fees – Based on class schedule
Food and housing – \$8,370
Books and supplies – \$1,200

Note: Costs are calculated for an Oklahoma student carrying 15 hours in the fall and spring semesters (30 hours total for the academic year).

FINANCIAL AID

Average financial aid package – \$24,947
Application process – 1. Complete the FAFSA. 2. Be admitted. 3. Financial aid is awarded.
Application deadlines – Contact Financial Assistance office. FAFSA deadline is April 15 for **best consideration** for all other scholarships, grants and loan deadlines.

CONTACT INFORMATION

Dr. Marian Redwine
Admissions Office
Southern Nazarene University
6729 N.W. 39th Expressway
Bethany, OK 73008
Phone – 405.491.6324
Fax – 405.491.6320
admissions@snu.edu
snu.edu



(main campus and any official branch campuses and/or learning sites)



GENERAL INFORMATION

Type of institution – Private/independent four-year university
Other locations – Tulsa
Support – Private/independent
Enrollment – 500
Student-faculty ratio – 13 to 1
Campus setting – Metropolitan
FAFSA number – 3180

Southwestern Christian University is a Christ-centered, liberal arts institution equipping students for a life of learning, leadership and service; integrating faith, learning and living; and empowering graduates to excel and to positively impact their world for Jesus Christ.

ACADEMIC INFORMATION

Academic emphasis – Southwestern Christian University focuses on education that is surrounded around the principles of scholarship, spirit and service.

Degree programs – swcu.edu/academic-catalog

Special programs – N/A

ADMISSIONS INFORMATION

Admissions – swcu.edu/admission-process

HOUSING AND STUDENT LIFE INFORMATION

Housing – swcu.edu/housing

Student life/activities – swcu.edu/student-life

COSTS

Tuition – \$17,040
Mandatory fees – \$5,074
Academic service fees – N/A
Food and housing – \$7,950-\$9,700
Books and supplies – \$2,000

Note: Costs are calculated for an Oklahoma student carrying 15 hours in the fall and spring semesters (30 hours total for the academic year).

FINANCIAL AID

Average financial aid package – \$12,300

Application process – swcu.edu/admissions/financial-assistance/traditional-financial-assistance

Application deadlines – swcu.edu/admissions/financial-assistance/financial-aid-policies

CONTACT INFORMATION

Admissions Office
Southwestern Christian University
7210 NW 39th Expressway
Bethany, OK 73008

Phone – 405.789.7661

Fax – 405.495.0078

Admissions@swcu.edu

hannah.hays@swcu.edu

swcu.edu



(main campus and any official branch campuses and/or learning sites)

GENERAL INFORMATION

Type of institution – Private/independent four-year university
Other locations – N/A
Support – Private/independent
Enrollment – 3,777
Student-faculty ratio – 9 to 1
Campus setting – Urban
FAFSA number – 3185

The University of Tulsa is a student-centered research university that cultivates interconnected learning experiences to explore complex ideas and create new knowledge in a spirit of free inquiry. Guided by our commitment to diversity, equity and service, we prepare individuals to make meaningful contributions to our campus, our community and our world.

ACADEMIC INFORMATION

Academic emphasis – Fine and performing arts; social, natural and health sciences; engineering; humanities; business; technology; and law

Degree programs – [utulsa.edu/explore-programs](https://www.utulsa.edu/explore-programs)

Special programs – Honors, Tulsa Undergraduate Research Challenge, Global Scholars, TU Scholars, Early Careers in Medicine, Leadership TU, National Merit Scholars and Pathway to Sports Academy

ADMISSIONS INFORMATION

Admissions – [utulsa.edu/admission](https://www.utulsa.edu/admission)

HOUSING AND STUDENT LIFE INFORMATION

Housing – [utulsa.edu/housing](https://www.utulsa.edu/housing)

Student life/activities – [utulsa.edu/student-life](https://www.utulsa.edu/student-life)

COSTS

Tuition – \$46,932
Mandatory fees – \$1,085
Academic service fees – Varies by major
Food and housing – \$13,622
Books and supplies – Free

Note: Costs are calculated for an Oklahoma student carrying 15 hours in the fall and spring semesters (30 hours total for the academic year).

FINANCIAL AID

Application process – Included in application for admission.
Application deadlines – Feb. 1 is priority scholarship deadline.

CONTACT INFORMATION

Office of Admission
 The University of Tulsa
 800 S. Tucker Drive
 Tulsa, OK 74104
Phone – 918.631.2307 or 918.631.2000
Toll free – 800.331.3050
Fax – 918.631.5003

admission@utulsa.edu
news@utulsa.edu
[utulsa.edu](https://www.utulsa.edu)
facebook.com/utulsa.edu
twitter.com/utulsa



(main campus and any official branch campuses and/or learning sites)

Oklahoma State Regents for Higher Education

P.O. Box 108850, Oklahoma City, OK 73101-8850

655 Research Parkway, Suite 200 | Oklahoma City, OK 73104 | 405.225.9180 | fax 405.225.9181

Student Information Hotline:

800.858.1840 or 405.225.9239 in Oklahoma City

okhighered.org



**OKLAHOMA STATE REGENTS
FOR HIGHER EDUCATION**

Improving our future by degrees