

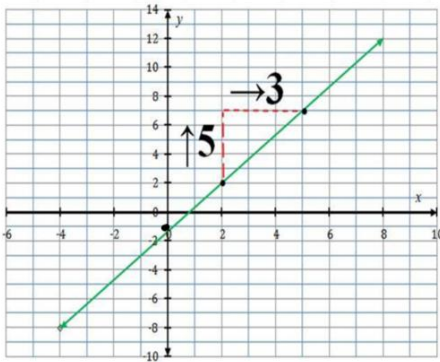
6-3 graphing Linear Relations

formula $\rightarrow y = mx + b$

↑
slope

↑
y-intercept

$y = 5x - 1$

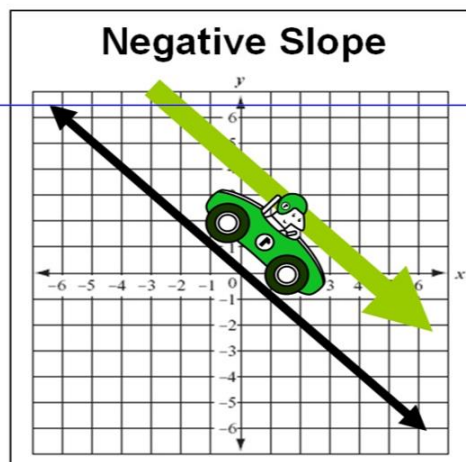
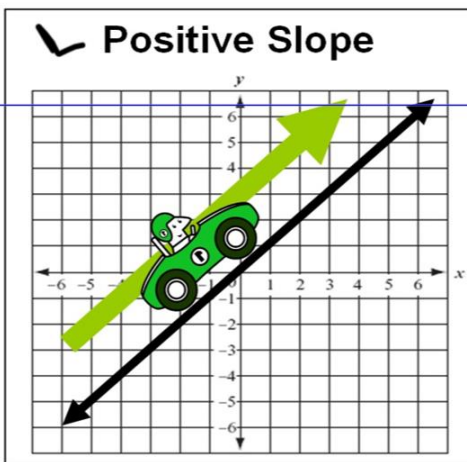


slope = $\frac{\text{rise} \uparrow}{\text{run} \rightarrow}$

a positive slope goes UP and to the right.

a negative slope goes DOWN and to the right.

An equation whose graph is a straight line is called a linear equation.



Changing to slope-intercept form

$$y = mx + b \quad \underline{\text{OR}} \quad mx + b = y$$

- 1) The "y" always stays.
- 2) Move the term that is on the same side as the "y".